

Mirage™

● Mirage™ Mortar
in Canyon



Create a sensory experience

Transform your space into a tactile landscape with Mirage™, an intricately textured acoustic panel range designed to create a sensory experience. The six refined designs bring depth, sophistication and a sense of movement to any interior design.

Using Cube™ base panels, you have the flexibility to choose from all Cube colours, ensuring a perfect match for your aesthetic. Mirage invites users to feel the delicately etched details up close or step back and enjoy its elegance as a piece of acoustic art.

To find out more about Mirage visit [autexglobal.com](https://www.autexglobal.com)

The art of intricate textures

The intricate patterns of the Mirage range draw inspiration from organic materials, giving it a refined yet earthy quality. Delicate micro patterns that have a striking visual impact when viewed at scale, creating a sense of movement and depth to transform spaces into a tactile landscape.

Each panel is made using precision laser etched to inscribe intricate designs onto the surface, featuring embossed and debossed patterns that create a stunning tactile quality and striking visual impact.

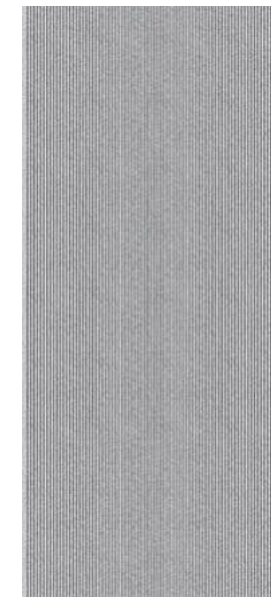


Design options

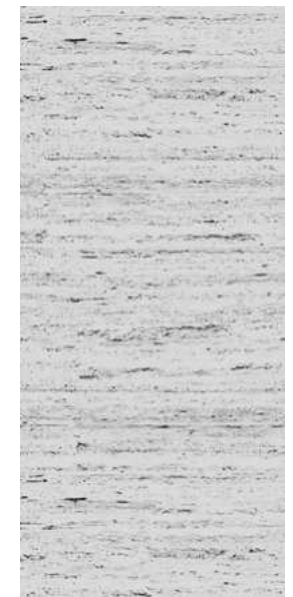
Choose from our range of design options.



Bouclé



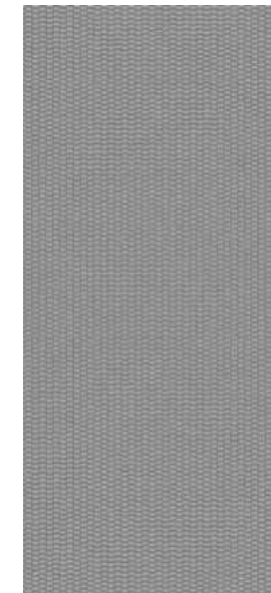
Brutalist



Lapis



Mortar



Offset



Rammed Earth



Behind the design —Bouclé

Inspired by Bouclé fabric, this design features a soft, irregular surface with subtle variations that reflect its warmth and complexity.



● Mirage™ Bouclé
in Gherkin

Behind the design —Brutalist

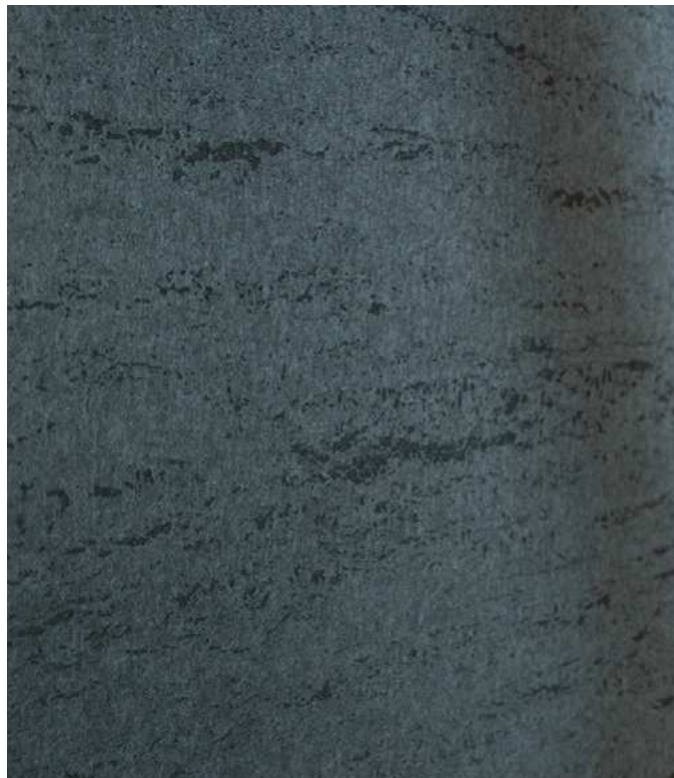
Influenced by brutalist architecture, Brutalist features a rugged concrete-like finish that emphasises strength and minimalism.



● Mirage™ Brutalist
in Savoye

Behind the design —Lapis

Lapis is inspired by travertine, with delicate striations and subtle pitting that reflect its organic, appearance.



● Mirage™ Lapis
in Caspian

Behind the design —Mortar

Mortar evokes the timeless elegance of a classic stucco finish, with a softly uneven surface that mimics the hand-troweled look.



● Mirage™ Mortar
in Canyon

Behind the design —Offset

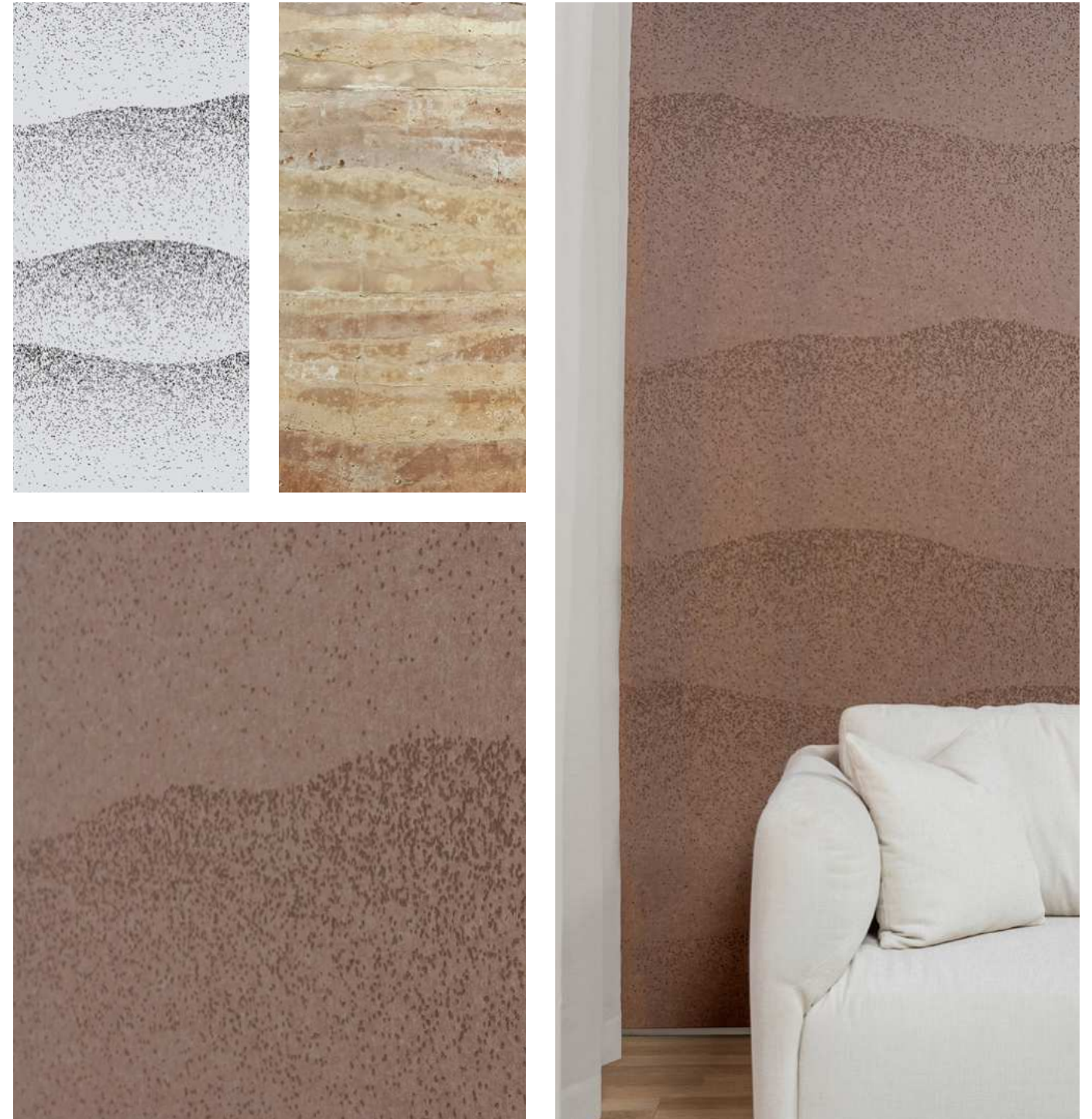
Offset draws from textile patterns, featuring overlapping lines and weaves that create a dynamic, fabric-like effect.



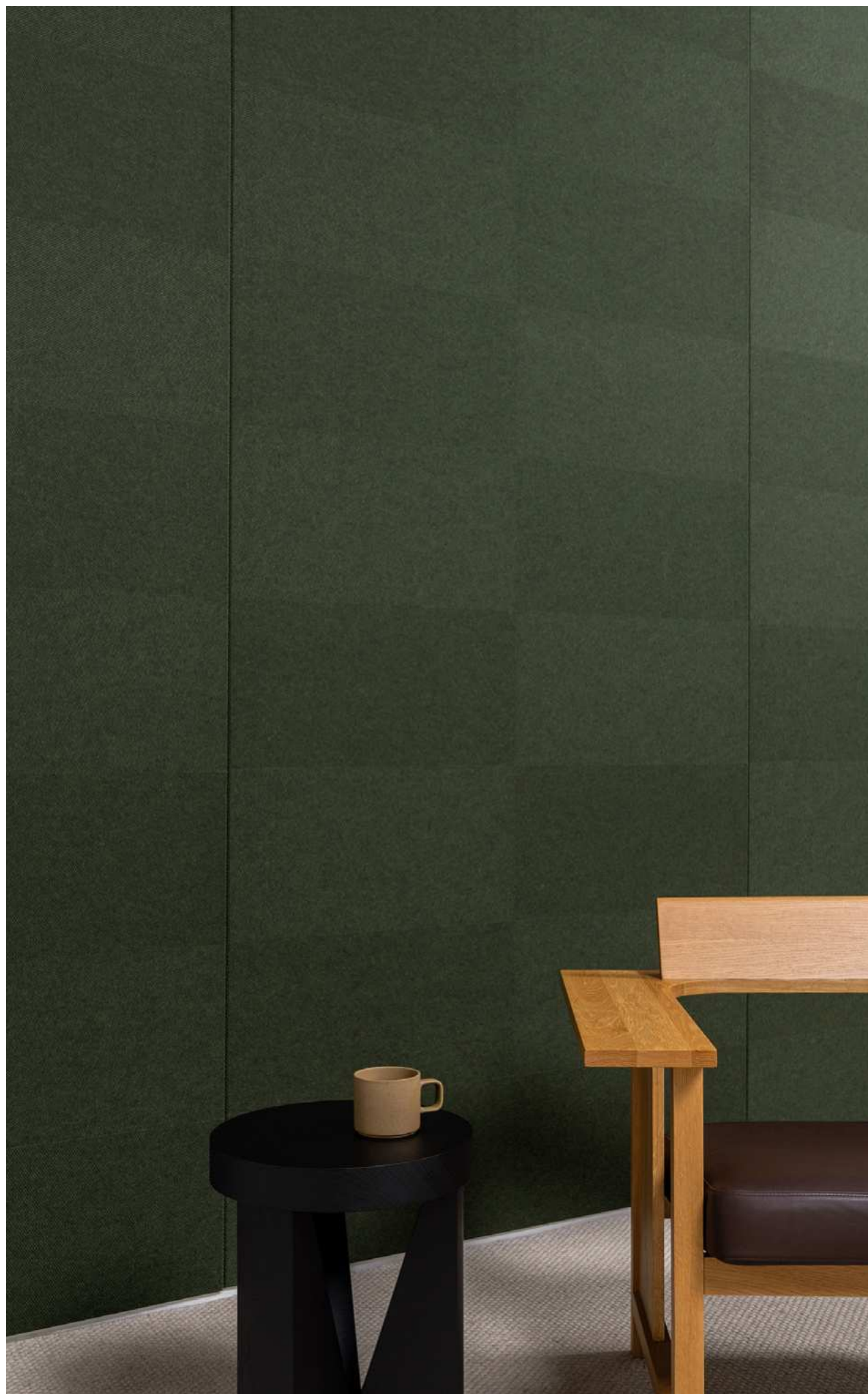
● Mirage™ Offset
in Highland

Behind the design —Rammed Earth

Rammed Earth features layered, compressed bands that capture the raw, natural beauty of compacted earth.



● Mirage™ Rammed Earth
in Terrace



Colour options

Choose from our range of Cube colours.



Pavillion



Savoye



Flatiron



Empire



Petronas



Opera



Parthenon



Pinnacle



Caspian



Muralla



Falling Water



Acros



Gherkin



Tree House



Highland



Beehive



Senado



Canyon



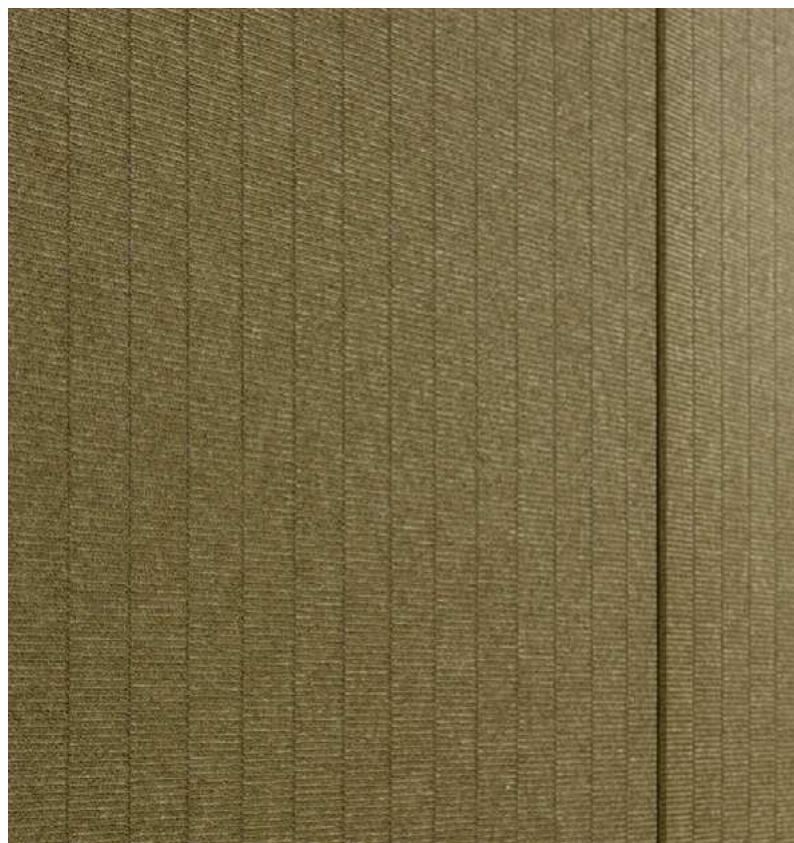
Sargazo



Terrace



Cavalier



Features and benefits

- Delivers excellent acoustic performance
- Six designs available
- Available on both 12 mm and 24 mm Cube™ panels
- Panel sizes are 2400 mm x 1200 mm and 2700 mm x 1200 mm
- Solid colour, with no edging or capping required
- Panels supplied with bevelled edges for a tidy and professional finish
- Highly durable, providing long-term stability and performance
- Carbon neutral product, made from a minimum of 79% recycled PET
- Made locally

Applications

- Decorative and functional acoustic treatment for interior spaces
- Suitable in high humidity areas



We are
proud to be a
carbon neutral
organisation

We have reduced and balanced all carbon emissions from our business operations, including manufacturing to zero.

We offer entirely
carbon neutral
products

All our products are carbon neutral with emissions offset through certified carbon credits.

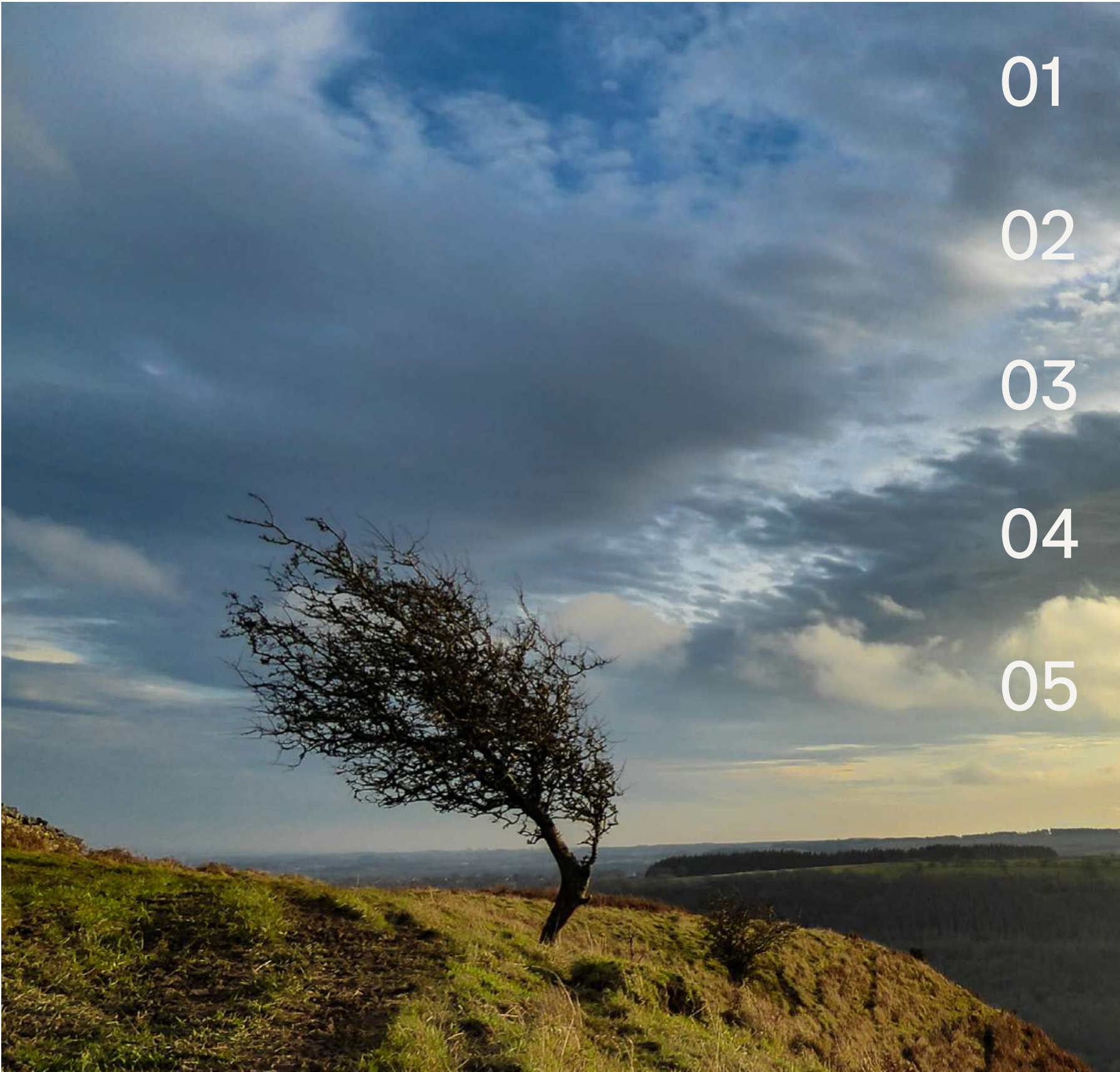
0kg

CO₂-e per kg of product



Sustainability pillars

The five pillars of our sustainability strategy define all aspects of our operations and the products we offer.



01



Climate change demands climate action We are carbon neutral in everything we do.

02



Closing the loop We are advocates for closing the loop on waste. We contribute by using recycled material through to creating recyclable products.

03



Sustainable supply chain We carefully select responsible suppliers to eliminate unethical practices and encourage good working conditions.

04



Supporting wellbeing in buildings All our products are made using only safe materials. No harmful chemicals are used in any stage of our process.

05

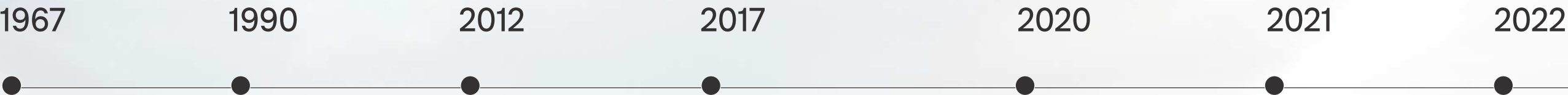


Operating a business for purpose and profit We strive to have a positive impact on our environment, our people, and the next generation.

In everything we do



Our journey to carbon neutrality



Founded in Auckland, NZ, creating underfelt for the flooring industry	Established a zero-waste production line	Reclaimed waste trimmings, reducing raw material use and associated emissions	First EPD's published and started measuring greenhouse gas emissions	Dematerialisation project which reduced raw material use by 30% for core product	We balanced all emissions from our acoustic products to zero	We balanced all emissions from our global operations to zero
---	--	--	---	---	---	---

Australia
New Zealand
United States of America
United Kingdom



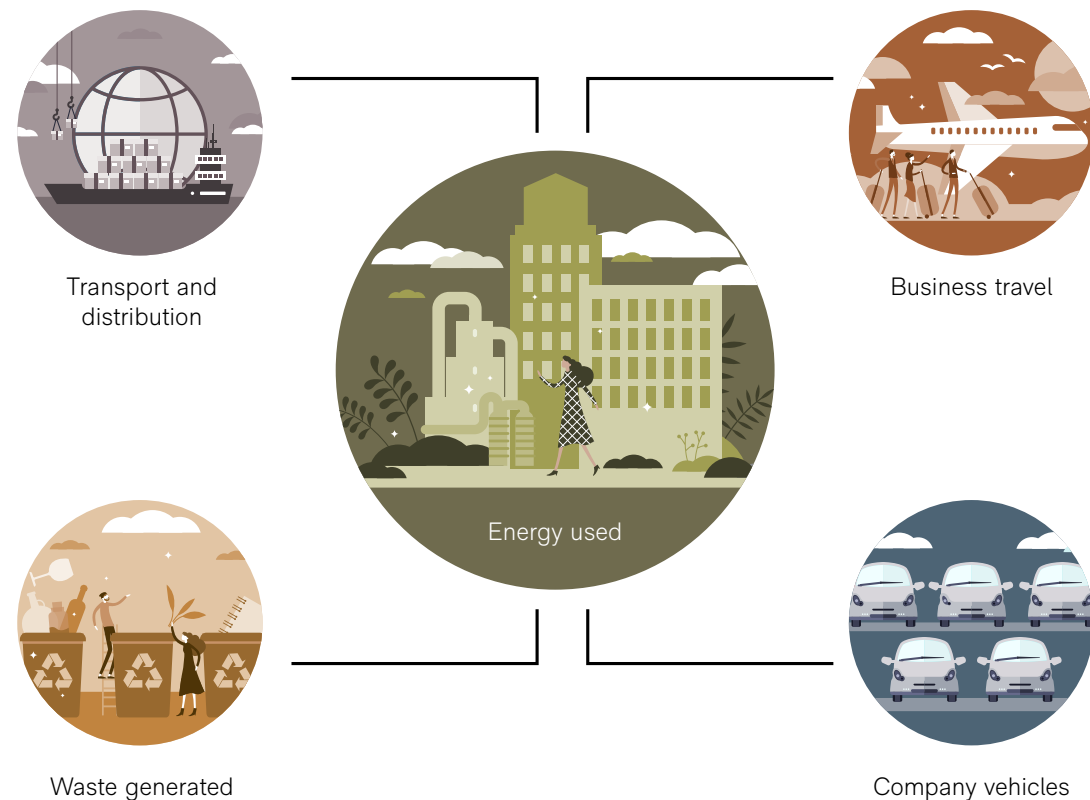
How we're fighting climate change

The climate crisis is the biggest issue of our generation. As a product designer and manufacturer, we have an opportunity to help improve the carbon impact of our industry.

Our operational carbon emissions

We are a carbon neutral business. We actively monitor the carbon emissions of our entire operation to better understand our carbon footprint and how we can further reduce emissions. We have an internal strategy to reduce our carbon emissions and have successfully delivered a number of carbon reduction initiatives within our operations. Any carbon emissions that are currently unavoidable are offset through certified carbon credits. We have a commitment to purchase only verified carbon credits that are retired on robust registers to ensure we are driving positive change.

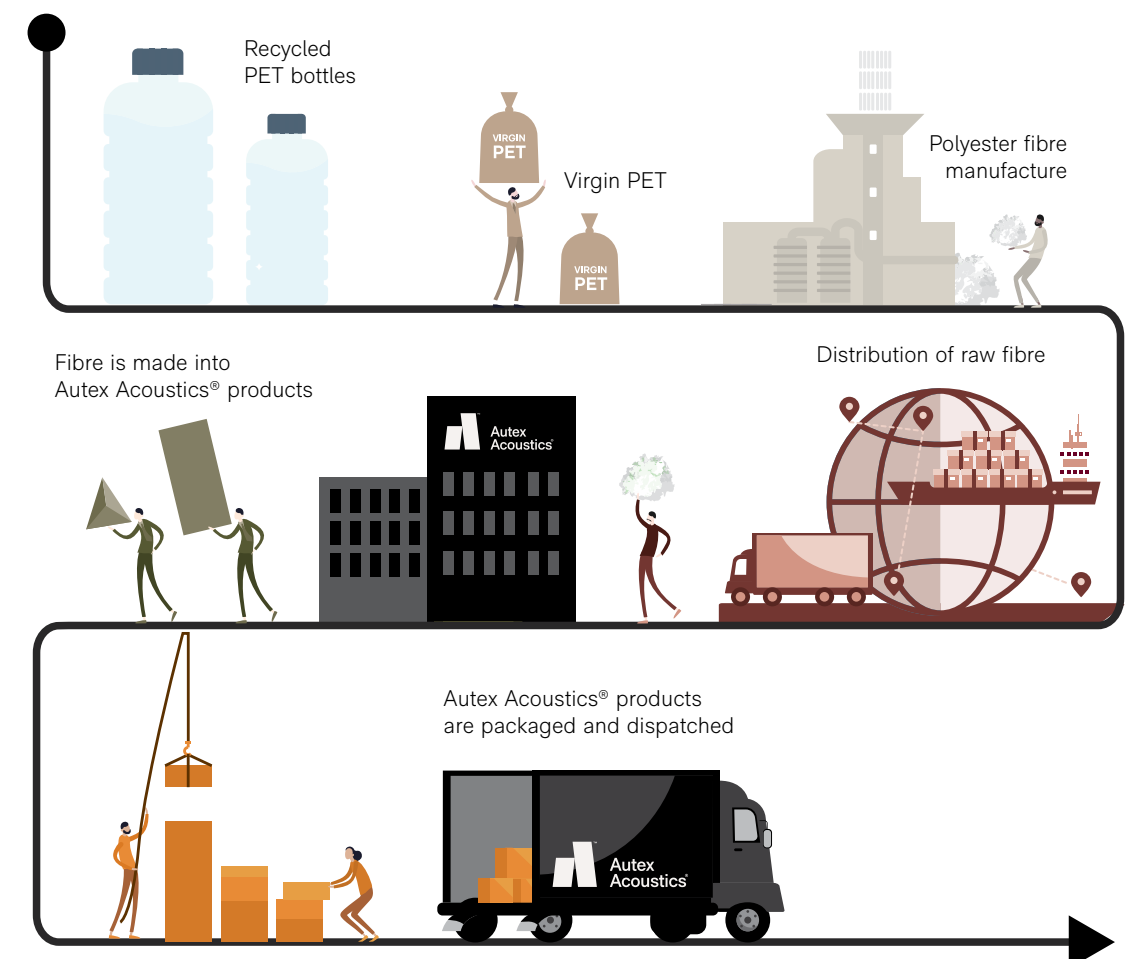
Key business activities contributing to our operational emissions

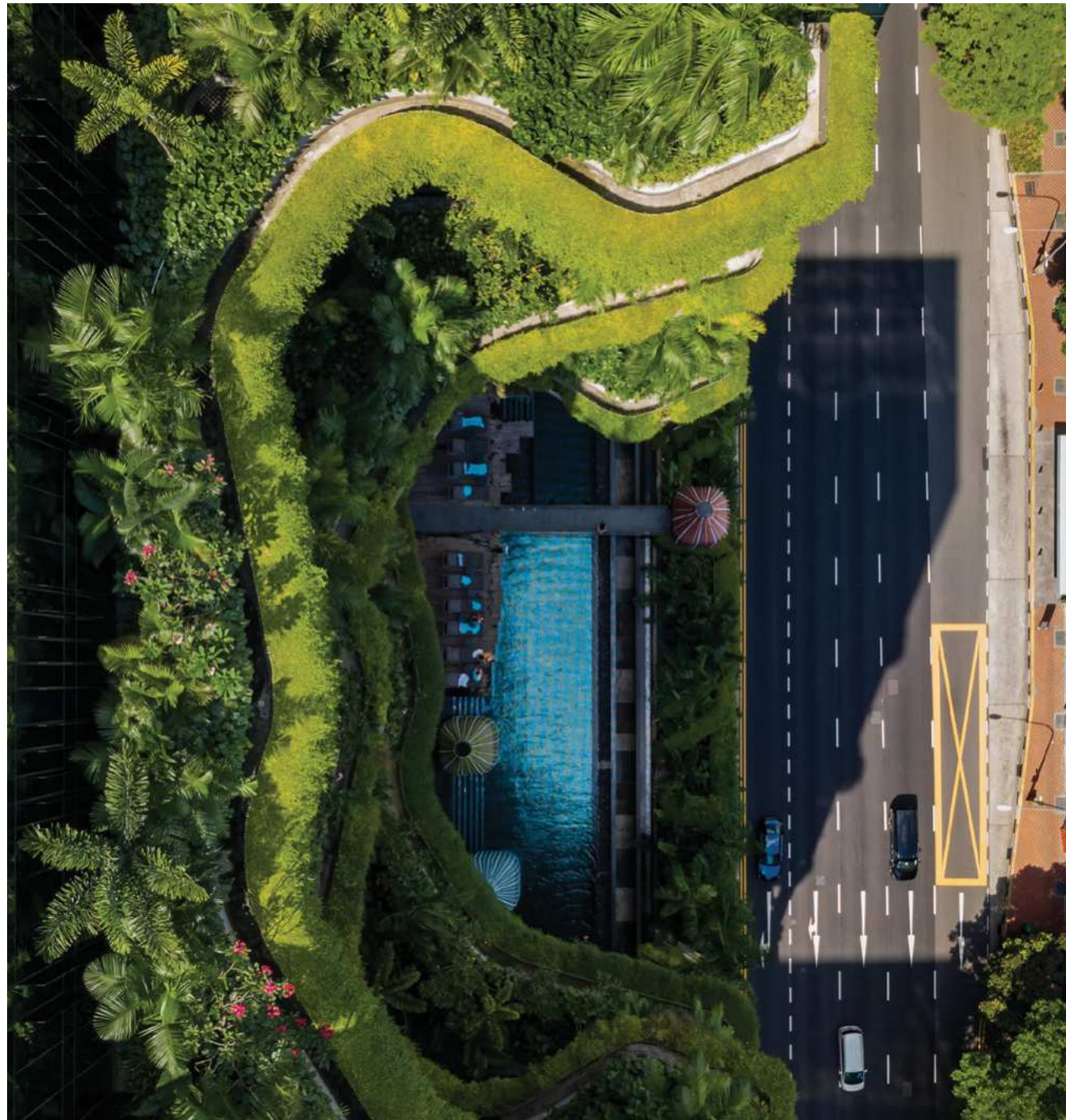


Embodied carbon of our products

Our products are carbon neutral, and we are the first business in our industry to include the cost of carbon in our products. We consider this an investment in present and future generations, and simply a cost of doing business. We calculate the embodied carbon of our products, from the raw material to the manufacturing gate, using industry recognised ISO standards. We have reduced the carbon footprint of our products through smart design and efficient manufacturing. While the embodied carbon of our products is low, they still do have a carbon impact. We mitigate this through our Carbon Neutral Product Initiative by offsetting the equivalent emissions using certified carbon credits. These carbon credits are generated from projects focused on renewable energy, fuel switching, and reforestation around the world.

Key activities contributing to the embodied carbon of our products





Certifications

Certifying your green building

Autex Acoustics products meet criteria for WELL, LEED, Green Star, and BREEAM building rating systems, helping you achieve certification for your project. For support and guidance on available rating system points, please visit www.autexglobal.com, or speak with your Autex Acoustics account manager.



Environmental Product Declaration

An Environmental Product Declaration (EPD) is a document that communicates information about the life-cycle environmental impact of a product, including embodied carbon. Our EPDs are created and verified in accordance with ISO 14025 and EN 15804, used for construction products and services.



GreenRate – Level A

GreenRate is a multi-attribute environmental certification that scores products on a range of environmental, health, and social measures. Autex Acoustics products are certified to achieve GreenRate Level A. Level A is the highest GreenRate level and demonstrates the highest level of product sustainability.



Declare – International Living Future Institute

The ingredients in our products have been reviewed against the Living Future Challenge Red List and achieve a Third-Party Verified 'Red List Free' status.



Products achieve the highest 'LBC Red List Free' status when:

- Ingredients are 100% disclosed and are not found in the Red List
- Products are shown to meet VOC emissions limits

We assure the accuracy of our certifications by having our Declare labels independently verified by a third party expert.



Heath Product Declaration

A Health Product Declaration (HPD) is a document that reports the ingredients of a product and the health effects associated with these ingredients. A Health Product Declaration has been generated for each of our products.



CDPH Standard

CDPH Standard Method (CA Section 01350) is a widely used standard to evaluate building products for low volatile organic chemicals (VOC) and formaldehyde emissions. All Autex Acoustics products meet the limits set by CDPH and the LEED building rating scheme.



ISO Certifications

ISO 14001 – Environmental Management

Autex Acoustics manufactures under environmental management processes that are ISO certified. This certification gives assurance that we manage any environmental impacts within our operations.



ISO 9001 – Quality Management

Autex Acoustics has a strict quality management system that is ISO certified. Robust quality processes from raw material through to product release help ensure our products meet expectations.



ISO 45001 – Health and Safety Management

Autex Acoustics manufacturing operations have an ISO 45001 certified Health and Safety Management System to ensure the safety and wellbeing of our people.



In everything we do

● **New Zealand**
702-718 Rosebank Road,
Private Bag 19988
Avondale 1746, Auckland
T 0800 428 839
T +64 9 828 9179
autexacoustics.co.nz

● **Australia**
285 Swan Street,
Richmond, VIC 3121
T 1800 678 160
T +61 3 9450 6700
autexacoustics.com.au

● **United Kingdom**
Unit J4, Lowfields Way,
Lowfields Business Park,
Elland, West Yorkshire
HX5 9DA
T +44 0 142 241 8899
autexacoustics.co.uk

● **United States**
1630 Dan Kipper Drive,
Riverside, CA 92507
T +1 424 203 1813
autexacoustics.com

Autex is an ISO certified organisation encompassing Quality (ISO 9001), Environmental (ISO 14001), and Health and Safety (ISO 45001). Brand names and logos are registered or unregistered trademarks owned or used under license by Autex Industries Limited or other members of the Autex Group. © Copyright 2024 Autex Industries Ltd. All rights reserved. It is the user's responsibility to determine if the product and information presented in this document is suitable for the intended application by engaging a suitably qualified consultant. The information contained in this document is correct to the best of our knowledge at the date of its publication. To verify that this document is the most current publication please check our website or contact your Autex Acoustics account manager.