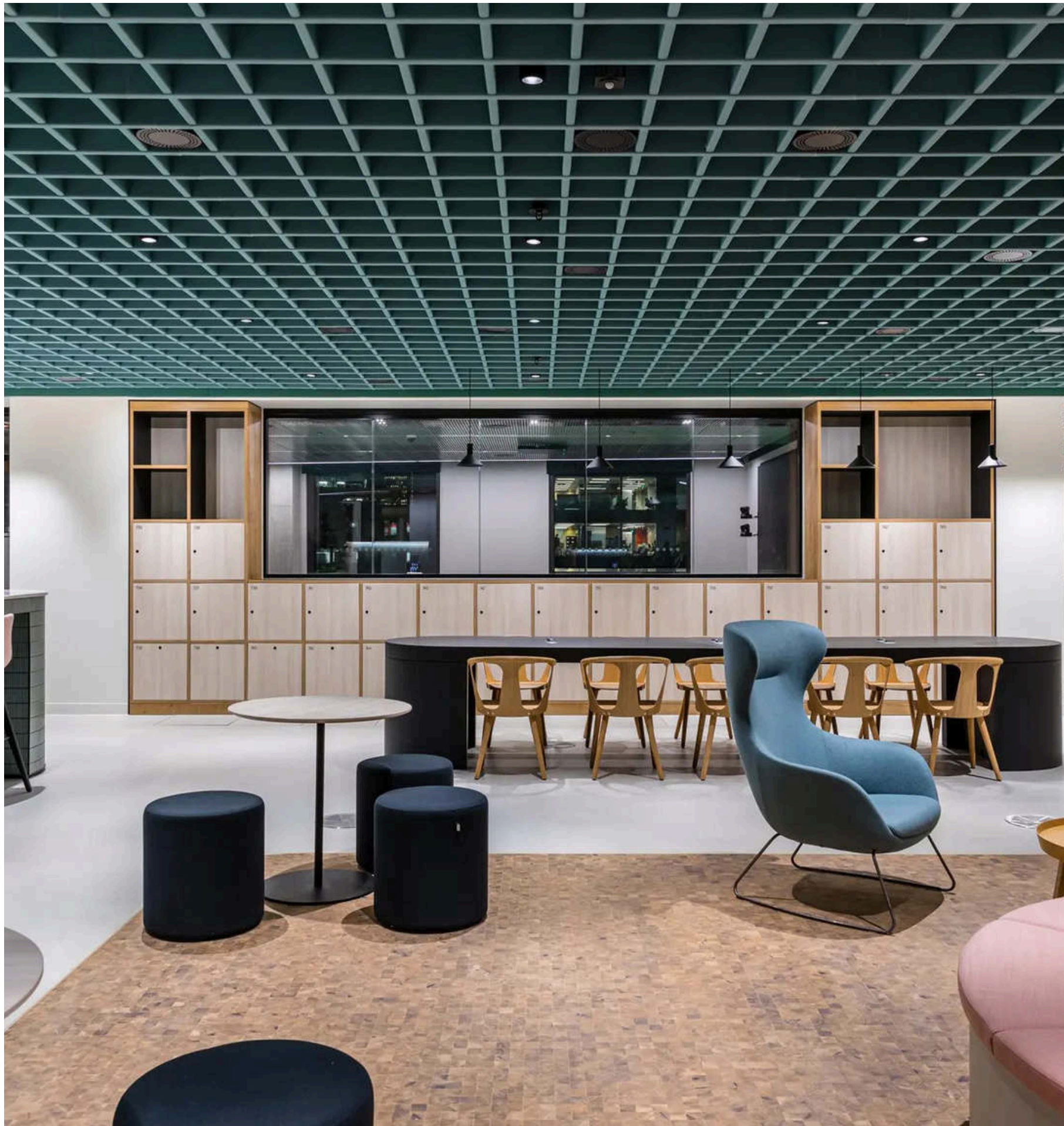


Frontier™



Pushing the Boundaries of Acoustic Design

Comprised of linear, almost skeletal elements, the modular Frontier™ system congregates to form undulating sculptures and rhythmic slatted features. Available in two variations—Fins and Raft—the Frontier system is designed to communicate with interior spaces via an adjustable channel and clip system—giving you complete control over the height, spacing, and placement of each individual component. Lightweight yet solid in appearance, Frontier Acoustic Fins and Raft are made from 100% polyester fibre and cut to form elegant 2D and 3D shapes. Frontier is designed to be ‘tuned’ to interior spaces, offering tailored acoustic absorption across a wide range of frequencies.



Features and Benefits

- Delivers excellent acoustic performance
- Available in 13 styles
- Formed by just three elements, Frontier is installed quickly and efficiently, saving time on site
- Easy to uninstall and relocate
- Can be 'tuned' to any space
- Constructed without adhesives

Applications

- Decorative, high-performance acoustic treatment for interior spaces
- Suitable for both wall and ceiling applications



Frontier™ Acoustic Fins

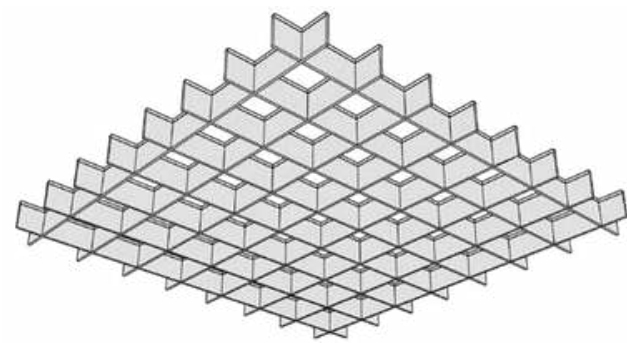
Elegant and refined, Frontier Acoustic Fins offer excellent acoustic absorption with sleek, gentle form—at once a design feature and a functional necessity. Lightweight and semi-rigid, Fins are available in nine standard styles with 12mm and 24mm thicknesses.

Modular in nature, the unique channel and clip system allows for complete control over the application of each individual component—giving you the freedom to mould the system to the contours and requirements of your space.

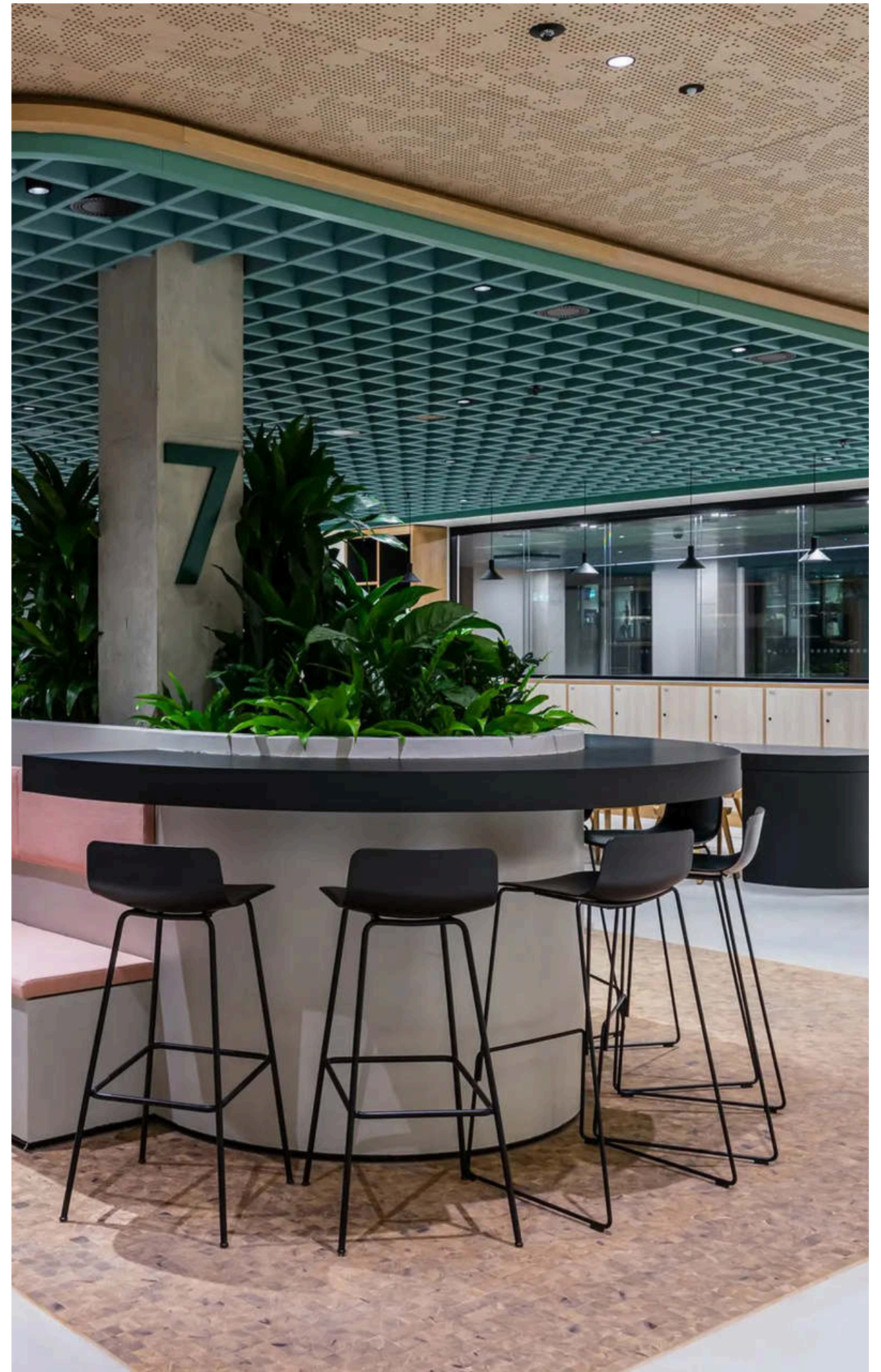
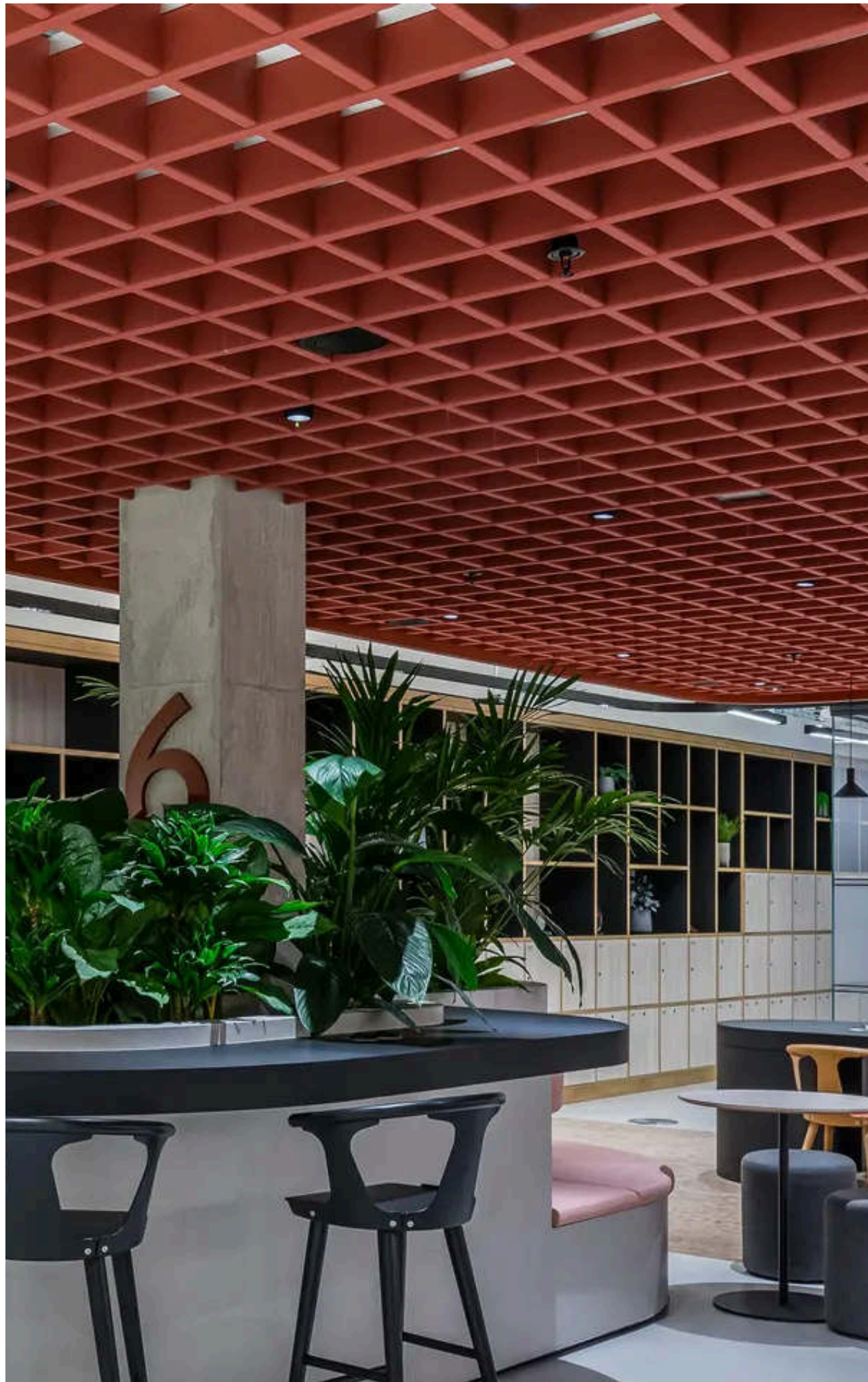
Patent
Panel Fixing System Patent
US Patent 10,113,312 | AU Patent 2016250499 |
GB Patent 2,545,789 | NZ Patent app 725770



Frontier™ Axis



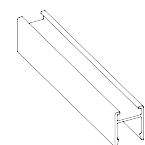
Axis (12mm only)



Frontier™

The system

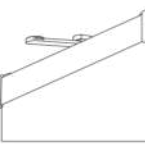
Increase productivity on-site, saving installation time and material costs.



Autex Frontier Extrusions
Multiuse matte black aluminium channels along with a system of components, act as a support for Acoustic Fins or Raft allowing for easy installation and adjustments on site.



Autex Mounting Clips The exclusive Frontier connector clip ‘clicks’ in place to enable Fins or Raft to be attached directly to the ceiling channel, leaving no exposed fasteners or adhesives.



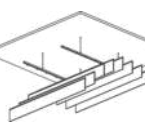
Autex Frontier End Caps
End caps are the perfect way to finish off the Frontier suspension system and our Raft Beam 100 style. They are simply clipped onto the end of the extrusion or raft for a refined finish. Made from recycled trimmings from our production lines, end caps have a second life as part of the system.



Choose Acoustic Fin or Raft styles Enjoy the freedom to create new and interesting ceiling and wall features with Fins or Raft. Choose Fins for simple and stylish arrangements, or Raft to add dimensional shape and volume.



Arrangement Versatility
Arrange Fins or Raft in countless configurations. Install in standard or custom sequences, or bring your vision to life working side-by-side with Autex Acoustics in-house acoustic design experts and account managers.



Easy Assembly
Frontier is assembled quickly and efficiently, saving time on site. A modular system, Frontier can move with your space—easy to uninstall and relocate as required.

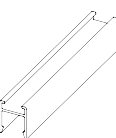


A Semi-permanent System
Frontier uses no adhesives. Each component can be removed quickly at the end of life, minimising negative impacts on the environment at the time of disposal.

Frontier™

The system components

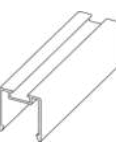
Pack components



RAFNEXPCB
Frontier 12mm Extrusion – Matte Black



RAFCCB
Autex Mounting Clip – Black



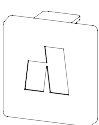
RAFNEX24PCB
Frontier 24mm Extrusion – Matte Black



RAFNEXRTPCB
Frontier Raft Extrusion – Matte Black



RMPECB100
Frontier Raft End Cap – Black

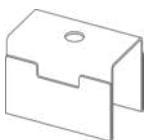


RMP24CC
Frontier 24mm Extrusion End Cap – Black



RMP12CC
Frontier 12mm Extrusion – Black

Accessories



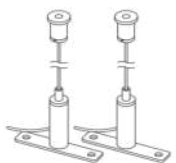
RAFWCP
Autex Removable W-Clip



RAFHDCC
Autex Heavy Duty Frontier Channel Connector with 4x M5 Grub Screws



RAFM6GC
Velda Grid Connector with M6 Thread



RAHVAS
Autex Adjustable Suspension Set - Channel



● London
Reed Smith

● Frontier™ Axis in a custom colour



We are
proud to be a
carbon neutral
organisation

We have reduced and balanced all carbon emissions from our business operations, including manufacturing to zero.

We offer entirely
carbon neutral
products

All our products are carbon neutral with emissions offset through certified carbon credits.

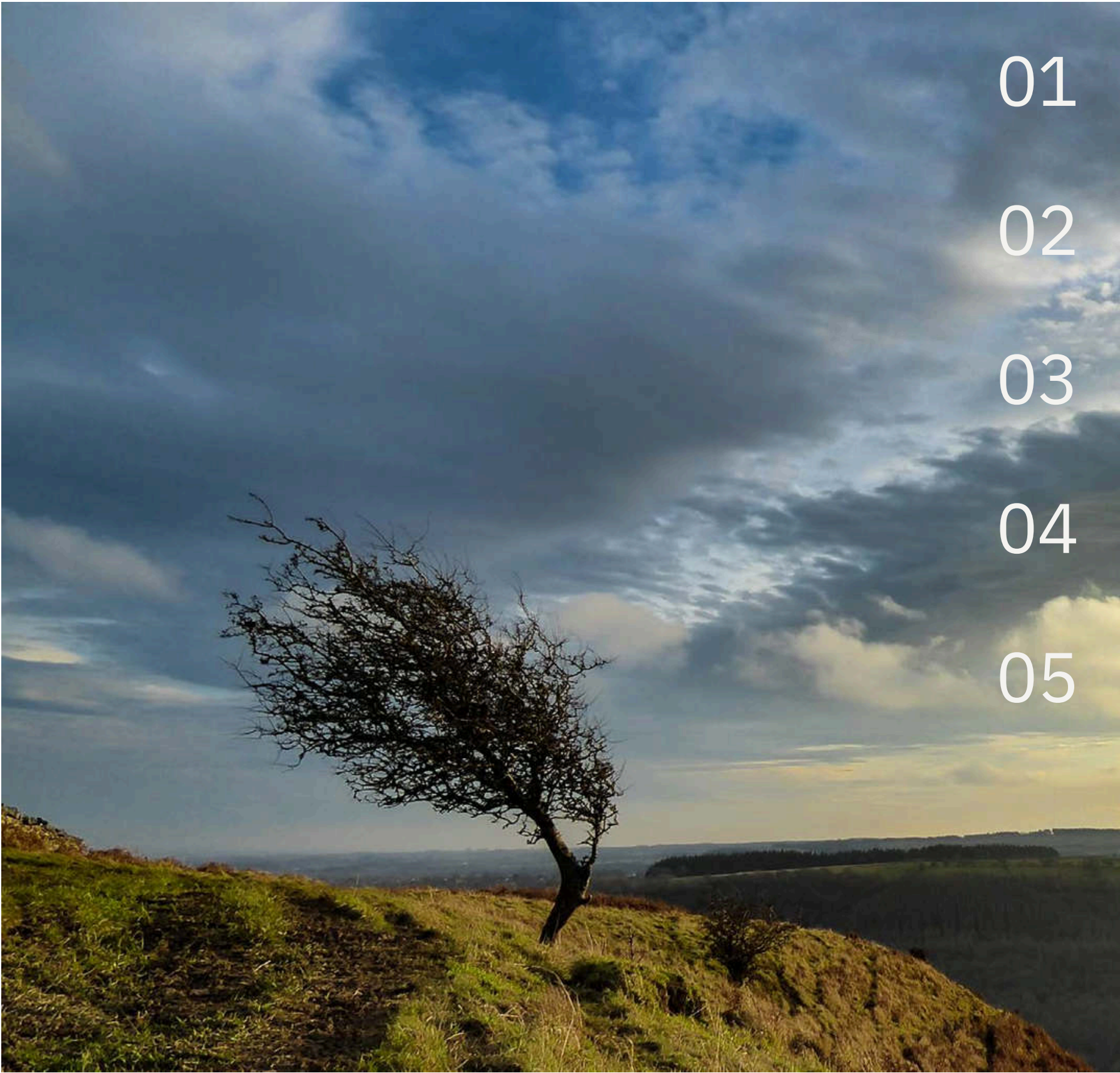
0 kg

CO₂ -e per kg of product



Sustainability pillars

The five pillars of our sustainability strategy define all aspects of our operations and the products we offer.



01



Climate change demands climate action We are carbon neutral in everything we do.

02



Closing the loop We are advocates for closing the loop on waste. We design with circularity front of mind.

03



Sustainable supply chain We carefully select responsible suppliers and take action to mitigate unethical practices, and encourage good working conditions.

04



Supporting wellbeing in buildings All our products are made using only safe materials. No harmful chemicals are present in our products.

05

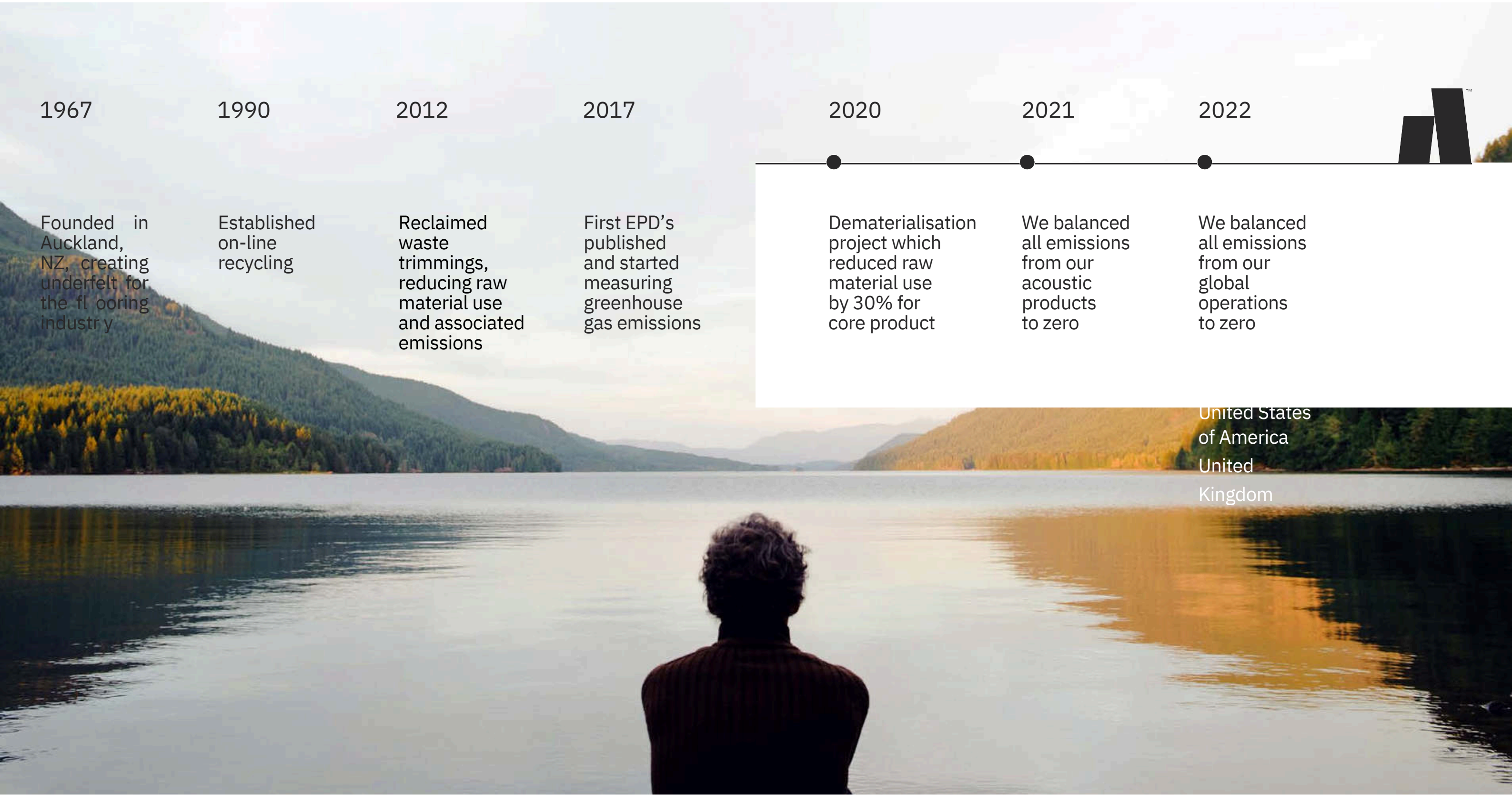


Operating a business for purpose and profit We strive to have a positive impact on our environment, our people, and the next generation.

In everything we do



Our journey to carbon neutrality



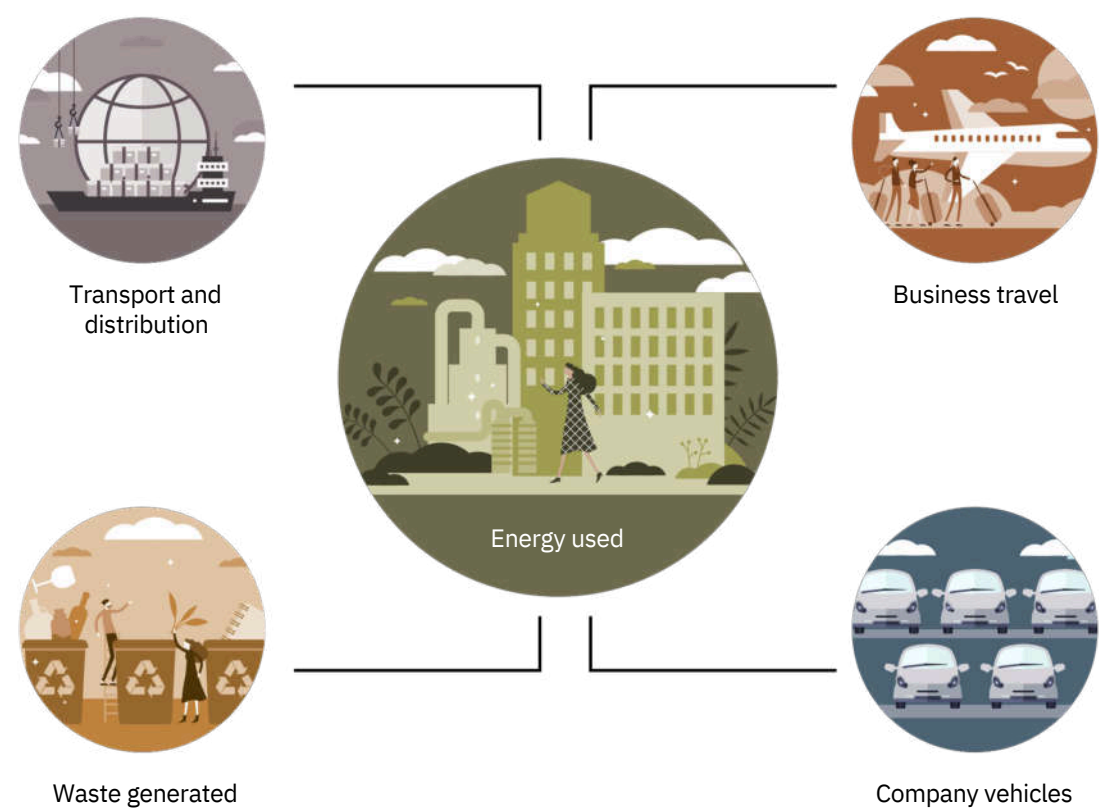
How we're fighting climate change

The climate crisis is the biggest issue of our generation. As a product designer and manufacturer, we have an opportunity to help improve the carbon impact of our industry.

Our operational carbon emissions

We are a carbon neutral business. We actively monitor the carbon emissions of our entire operation to better understand our carbon footprint and how we can further reduce emissions. We have an internal strategy to reduce our carbon emissions and have successfully delivered a number of carbon reduction initiatives within our operations. Any carbon emissions that are currently unavoidable are offset through certified carbon credits. We have a commitment to purchase only verified carbon credits that are retired on robust registers to ensure we are driving positive change.

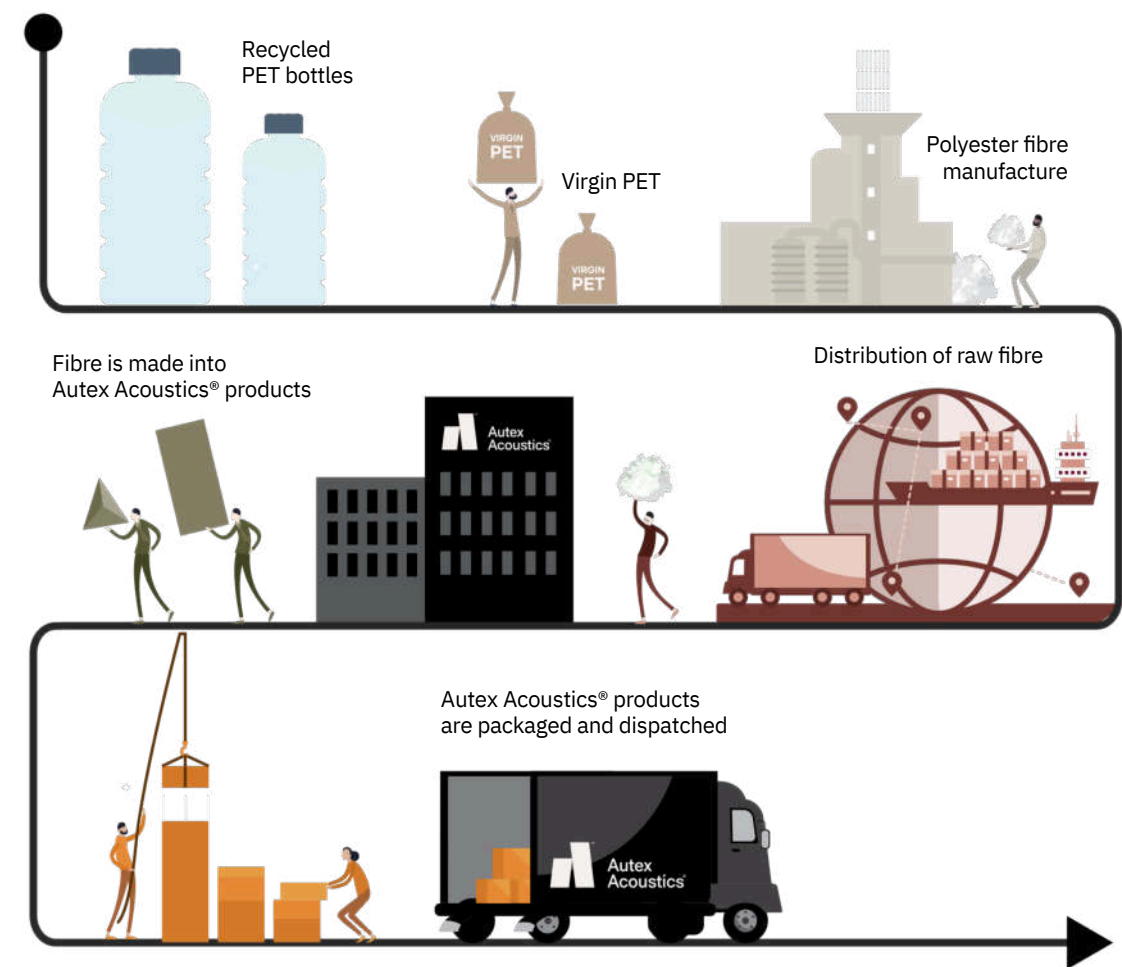
Key business activities contributing to our operational emissions

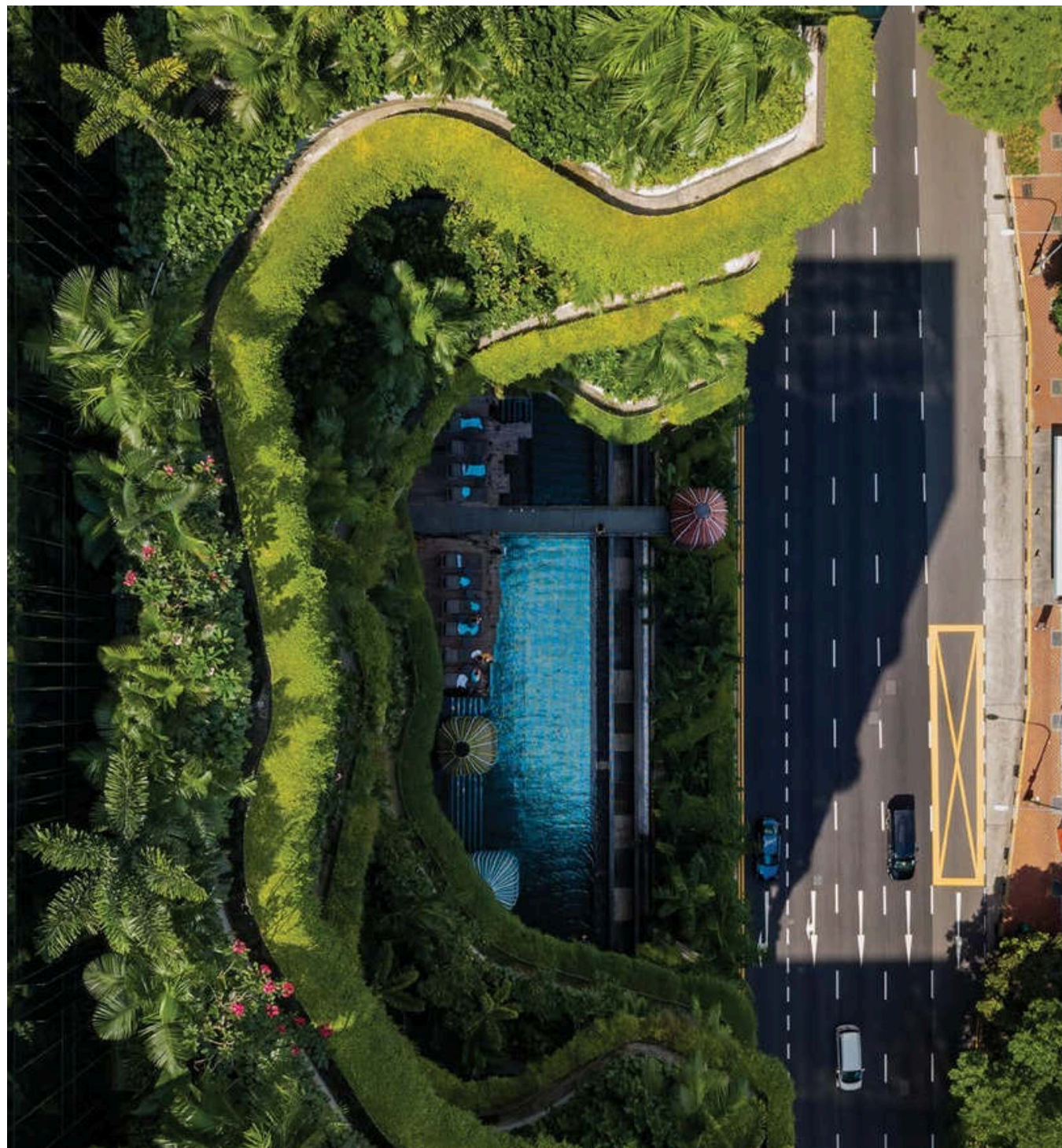


Embodied carbon of our products

Our products are carbon neutral, and we are the first business in our industry to include the cost of carbon in our products. We consider this an investment in present and future generations, and simply a cost of doing business. We calculate the embodied carbon of our products, from the raw material to the manufacturing gate, using industry recognised ISO standards. We have reduced the carbon footprint of our products through smart design and efficient manufacturing. While the embodied carbon of our products is low, they still do have a carbon impact. We mitigate this through our Carbon Neutral Product Initiative by offsetting the equivalent emissions using certified carbon credits. These carbon credits are generated from projects focused on renewable energy, fuel switching, and reforestation around the world.

Key activities contributing to the embodied carbon of our products





Credentials

Certifying your green building

Autex Acoustics products meet criteria for NABERS, WELL, LEED, Green Star, and BREEAM building rating systems, helping you achieve certification for your project. For support and guidance on available rating system points, please visit autexglobal.com, or speak with your Autex Acoustics account manager.



Environmental Product Declaration

An Environmental Product Declaration (EPD) is a document that communicates information about the life-cycle environmental impact of a product, including embodied carbon. Our EPDs are created and verified in accordance with ISO 14025 and EN 15804, used for construction products and services.



GreenRate – Level A

GreenRate is a multi-attribute environmental certification that scores products on a range of environmental, health, and social measures. Autex Acoustics products are certified to achieve GreenRate Level A. Level A is the highest GreenRate level and demonstrates the highest level of product sustainability.



Declare – International Living Future Institute

The ingredients in our products have been reviewed against the Living Future Challenge Red List and achieve a Third-Party Verified 'Red List Free' status.



Products achieve the highest 'LBC Red List Free' status when:

- Ingredients are 100% disclosed and are not found in the Red List
- Products are shown to meet VOC emissions limits

We assure the accuracy of our certifications by having our Declare labels independently verified by a third party expert.



Health Product Declaration

A Health Product Declaration (HPD) is a document that reports the ingredients of a product and the health effects associated with these ingredients. A Health Product Declaration has been generated for each of our products.



CDPH Standard

CDPH Standard Method (CA Section 01350) is a widely used standard to evaluate building products for low volatile organic chemicals (VOC) and formaldehyde emissions. All Autex Acoustics products meet the limits set by CDPH and the LEED building rating scheme.



ISO Certifications

ISO 14001 – Environmental Management

Autex Acoustics manufactures under environmental management processes that are ISO certified. This certification gives assurance that we manage any environmental impacts within our operations.



ISO 9001 – Quality Management

Autex Acoustics has a strict quality management system that is ISO certified. Robust quality processes from raw material through to product release help ensure our products meet expectations.



ISO 45001 – Health and Safety Management

Autex Acoustics manufacturing operations have an ISO 45001 certified Health and Safety Management System to ensure the safety and wellbeing of our people.



In everything we do

● New Zealand
702-718 Rosebank Road,
Private Bag 19988,
Avondale 1746, Auckland
T 0800 428 839
T +64 9 828 9179
autexacoustics.co.nz

● Australia
121-131 Global Avenue,
Essendon Fields,
VIC 3041
T 1800 678 160
T +61 3 9450 6700
autexacoustics.com.au

● United Kingdom
Unit J4, Lowfields Way,
Lowfields Business
Park, Elland, West
Yorkshire, HX5 9DA T
+44 0 142 241 8899
autexacoustics.co.uk

● United States
742 S Hill Street,
Suite 501, Los Angeles,
CA 90014
T +1 424 203 1813
autexacoustics.com

Autex is an ISO certified organisation encompassing Quality (ISO 9001), Environmental (ISO 14001), and Health and Safety (ISO 45001). Brand names and logos are registered or unregistered trademarks owned or used under license by Autex Industries Limited or other members of the Autex Group. © Copyright 2025 Autex Industries Ltd. All rights reserved. It is the user's responsibility to determine if the product and information presented in this document is suitable for the intended application by engaging a suitably qualified consultant. The information contained in this document is correct to the best of our knowledge at the date of its publication. To verify that this document is the most current publication please check our website or contact your Autex Acoustics® account manager.