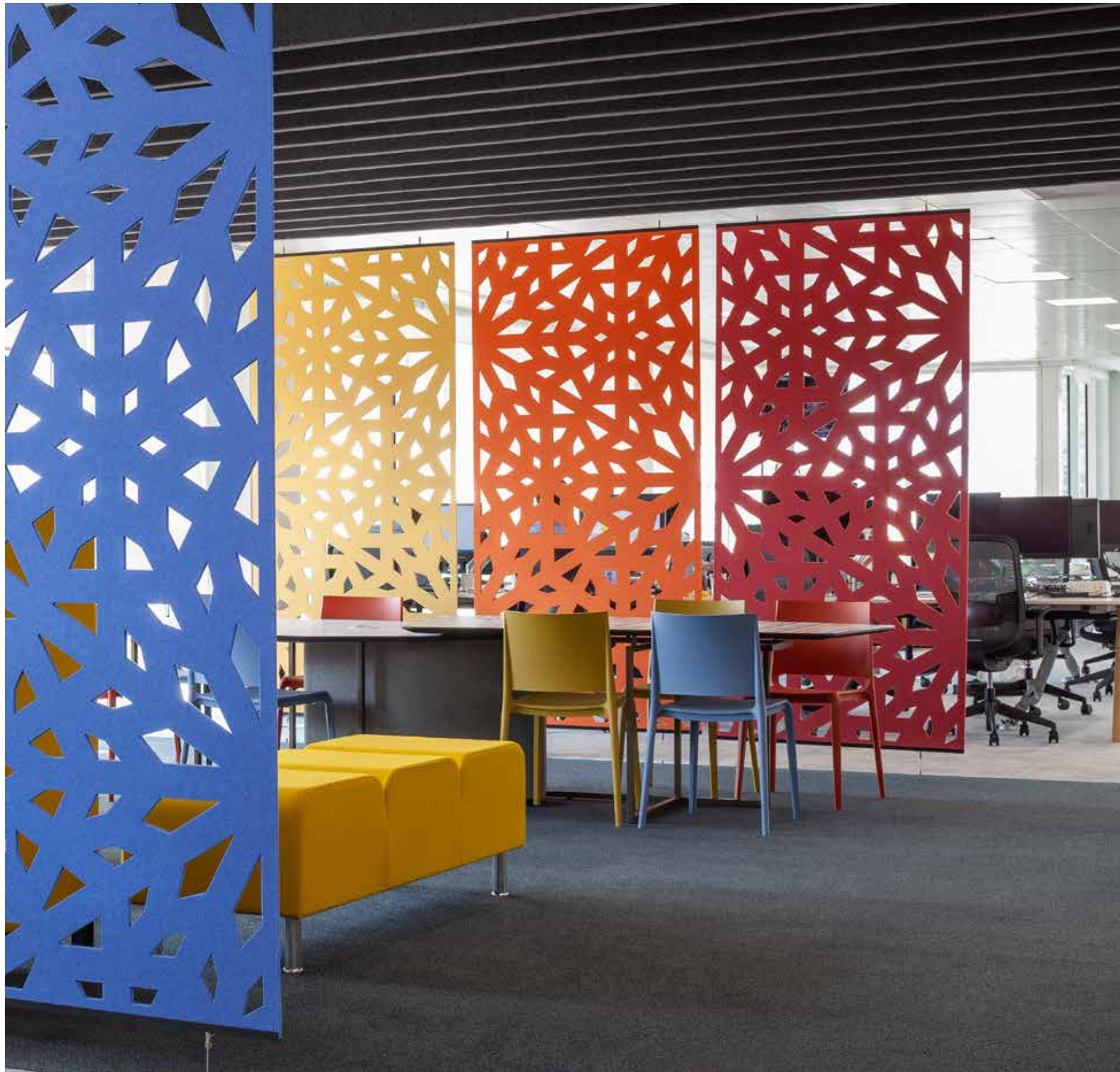


Cascade™

● Custom Cascade™
Static Screens in Empire

● Autex Acoustics
United Kingdom



Sheer tranquility

As the name suggests, Cascade™ Hanging Screens are spatial and acoustic partitions that fall elegantly from the ceiling to the floor—fixed or suspended at either end via the Cascade suspension kit.

The Cascade family consists of three distinct screen styles—Static, Folding, and Expanding—each made from 100% polyester fiber with delicate water-cut patterns. Static screens are 47.2” by 95”, holding space without obstructing sightline in open-plan environments. Folding screens are the same dimensions, but their water-cut patterns fold out, increasing surface area for acoustic absorption. Expanding Screens start at 47.2” by 95”, growing 100% in size through a series of intricate cuts to form fine, lace-esque patterns.

Lightweight yet sturdy, Cascade Hanging Screens are semi-permanent by nature; easy to install, uninstall, and move around your space as required.

To find out more about Cascade visit www.autexglobal.com



Features and benefits

- Delivers excellent acoustic performance
- A complete system, simple to install straight out of the box
- Lightweight and incredibly easy to handle on-site
- Easy to retrofit in existing spaces
- Semi-permanent so that you can change your space as required
- Environmentally conscious product with recycled material content and no added chemical binders
- Low VOC, non-toxic, non-irritant, non-allergenic and contains no Red List chemicals—great for IEQ

Applications

- Decorative and functional acoustic screen system for interior spaces
- Can be fixed to, or suspended from, ceilings and floors
- Effortlessly creates breakout zones in open-plan spaces



The Autex Acoustics[®] sustainability pillars

Our sustainability strategy provides the foundation and direction for our sustainability mission and goals. Our sustainability strategy is split into five pillars.



Climate change - We aim to maintain our position as a net-zero carbon organization and offer carbon neutral products. Autex Acoustics began carbon accounting in 2017 and we continue to measure and monitor our GHG emissions which help inform carbon reduction initiatives. Remaining carbon emissions are mitigated using certified carbon credits.



Purpose and profit - Our goal is to positively impact our environment, our people, and the next generation. Autex Acoustics has committed a fund to support restorative social and environmental programmes.



Closing the loop - We aim to increase the uptake of product stewardship in the construction industry and expand our product takeback schemes to help build a more circular economy. We avoid waste through reducing material inputs to our products and designing for reuse/disassembly. We reuse waste from our manufacturing operations to make more product. We incorporate recycled PET waste into new product and use recyclable cardboard as packaging.



Wellbeing - We aim to ensure all current and future Autex Acoustics products avoid harmful chemicals. Our products are simple and designed without any toxic ingredients to support human and environmental health. Autex Acoustics products have a profound impact on the acoustic environment of building interiors and wellbeing of occupants.



Supply chain - We aim to eliminate any unethical practices in our supply chain to encourage good working conditions throughout our supplier network. Autex Acoustics carefully selects the best suppliers to ensure we deliver quality products that have a responsible social and environmental track record. As an organization that relies on a global supply chain, we recognize the pressing—and ongoing—need to eliminate unethical practices within our own supply chain, particularly with regards to modern slavery.

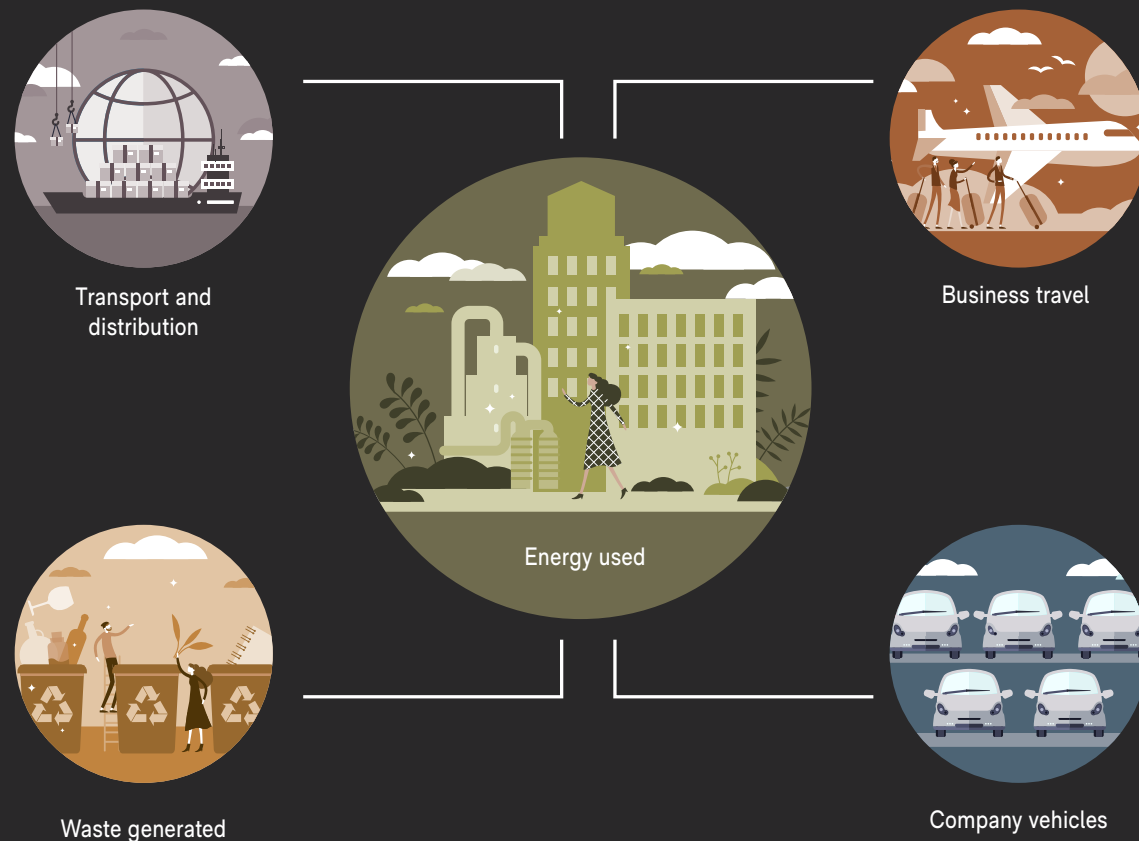
How we're fighting climate change

The climate crisis is the biggest issue of our generation. As a product designer and manufacturer, we have an opportunity to help improve the carbon impact of our industry.

Our operational carbon emissions

We are a carbon neutral business. We actively monitor the carbon emissions of our entire operation to better understand our carbon footprint and how we can further reduce emissions. We have an internal strategy to reduce our carbon emissions and have successfully delivered a number of carbon reduction initiatives within our operations. Any carbon emissions that are currently unavoidable are offset through certified carbon credits. We have a commitment to purchase only verified carbon credits that are retired on robust registers to ensure we are driving positive change.

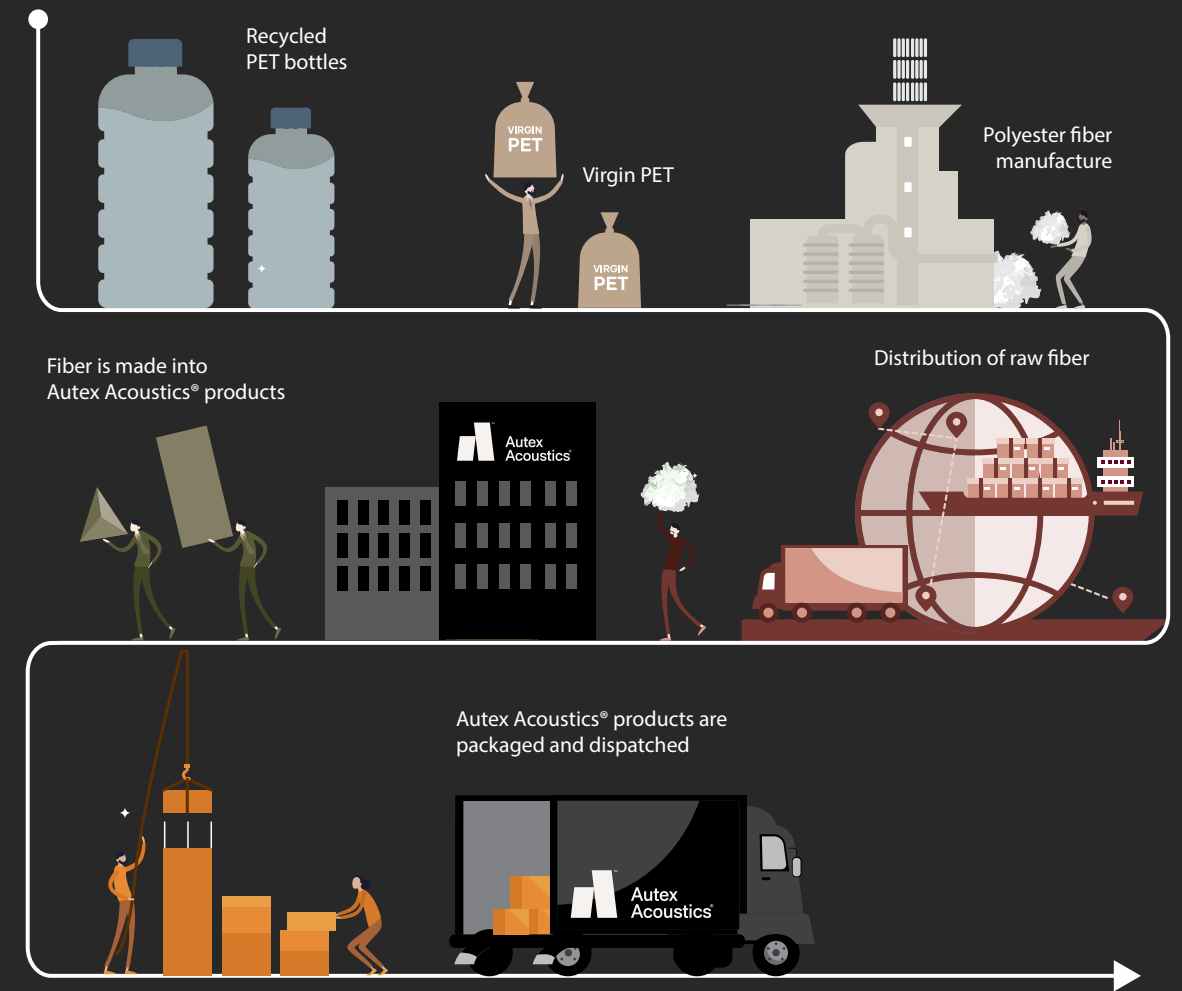
Key business activities contributing to our operational emissions

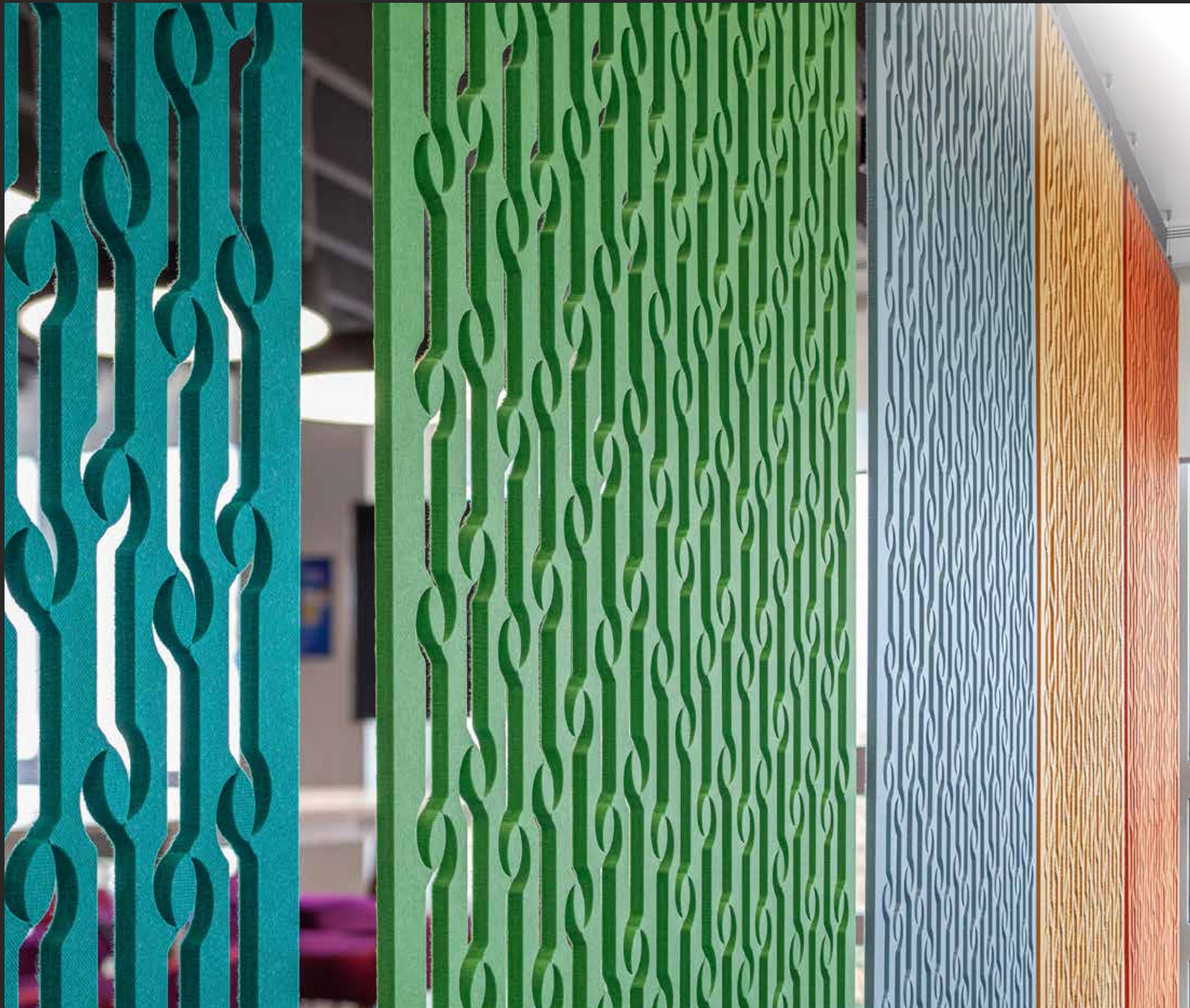


Embodied carbon of our products

Our products are carbon neutral, and we are the first business in our industry to include the cost of carbon in our products. We consider this an investment in present and future generations, and simply a cost of doing business. We calculate the embodied carbon of our products, from the raw material to the manufacturing gate, using industry recognised ISO standards. We have reduced the carbon footprint of our products through smart design and efficient manufacturing. While the embodied carbon of our products is low, they still do have a carbon impact. We mitigate this through our Carbon Neutral Product Initiative by offsetting the equivalent emissions using certified carbon credits. These carbon credits are generated from projects focused on renewable energy, fuel switching and reforestation around the world.

Key activities contributing to the embodied carbon of our products





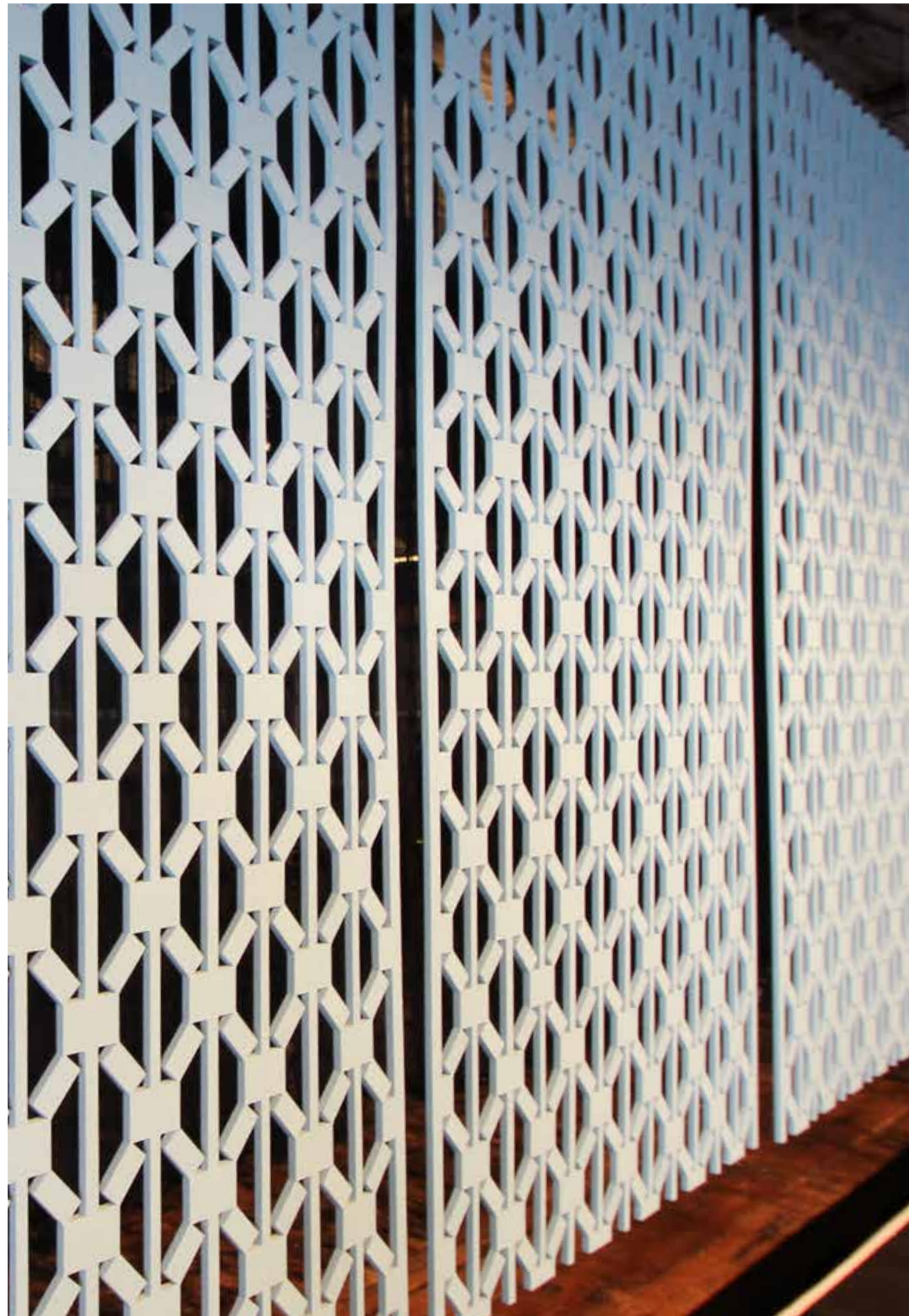
Cascade™ Expanding Screens

In perpetual evolution, the Cascade Expanding Screen blooms and wanes to meet the needs of your space. With a gentle tug, the screen concertinas out, growing 100% in size without off-cuts or cut-outs; an intuitive design that is both environmentally and spatially aware.

Patent

Expanding and Folding Panel Patent
US Patent 10,184,249

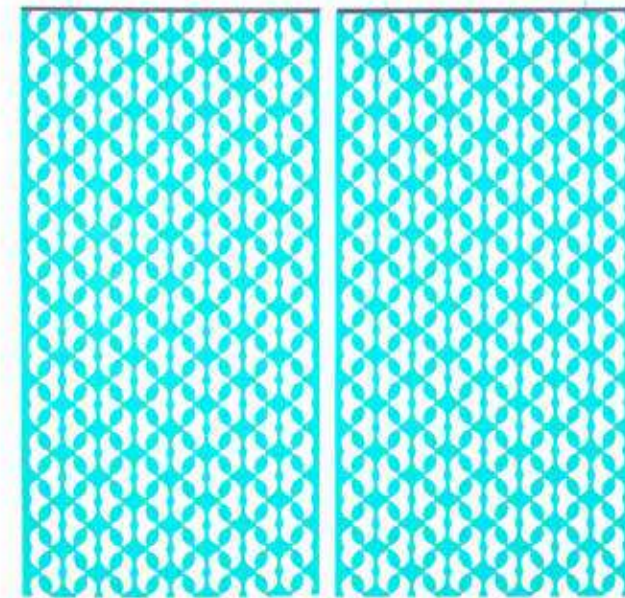
To find out more about Cascade
visit www.autexglobal.com



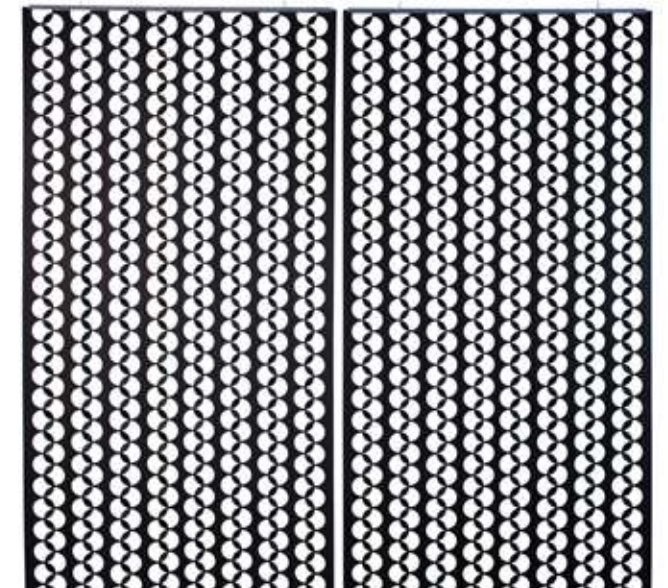
Expanding design options

Pack contents

2 Cascade Expanding Screens, 2 Frontier Channels,
4 Ceiling Connectors, 4 1 m Wires, 4 Autex Suspension Sliders



Design E1 more colors available



Design E2 more colors available



Design E3 more colors available



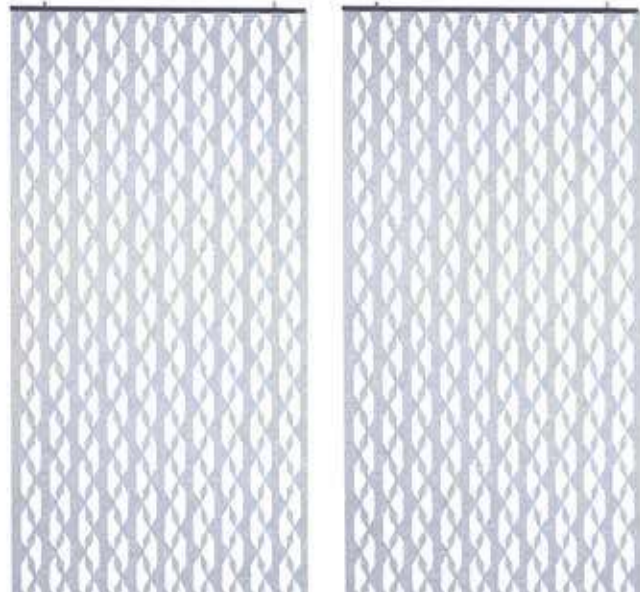
Design E4 more colors available

*Expanding Screens increase by 100% when fully expanded, therefore two screens are created from one panel of Cube™. Images are shown fully expanded.

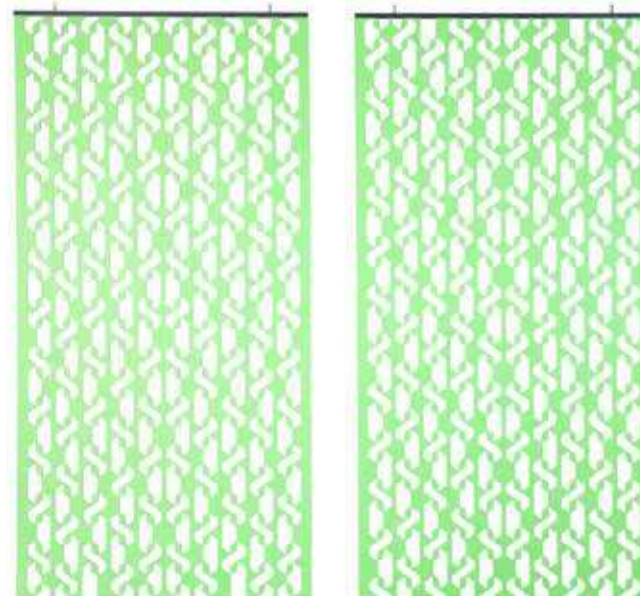
Expanding design options

Pack contents

2 Cascade Expanding Screens, 2 Frontier Channels,
4 Ceiling Connectors, 4 1 m Wires, 4 Autex Suspension Sliders

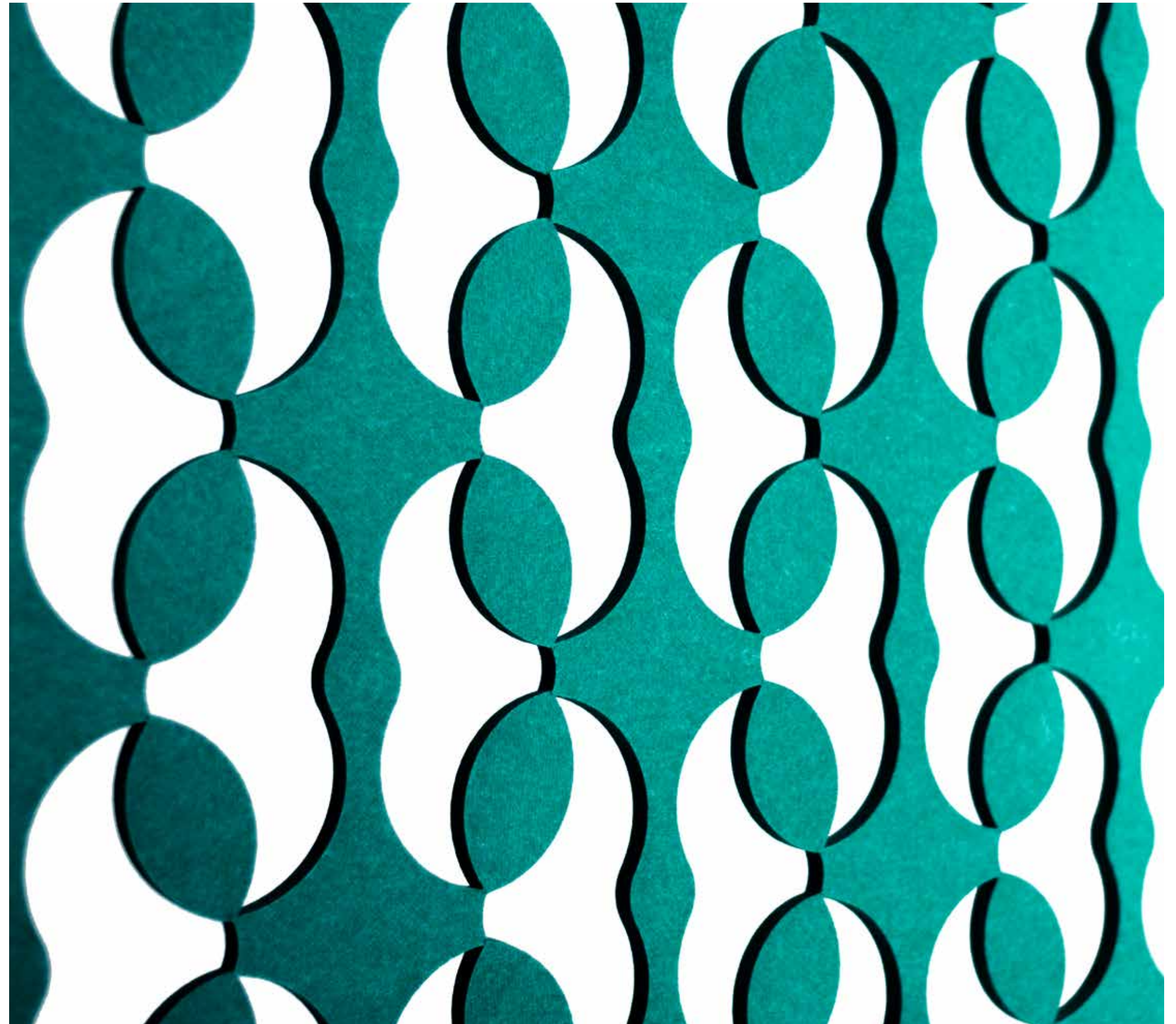


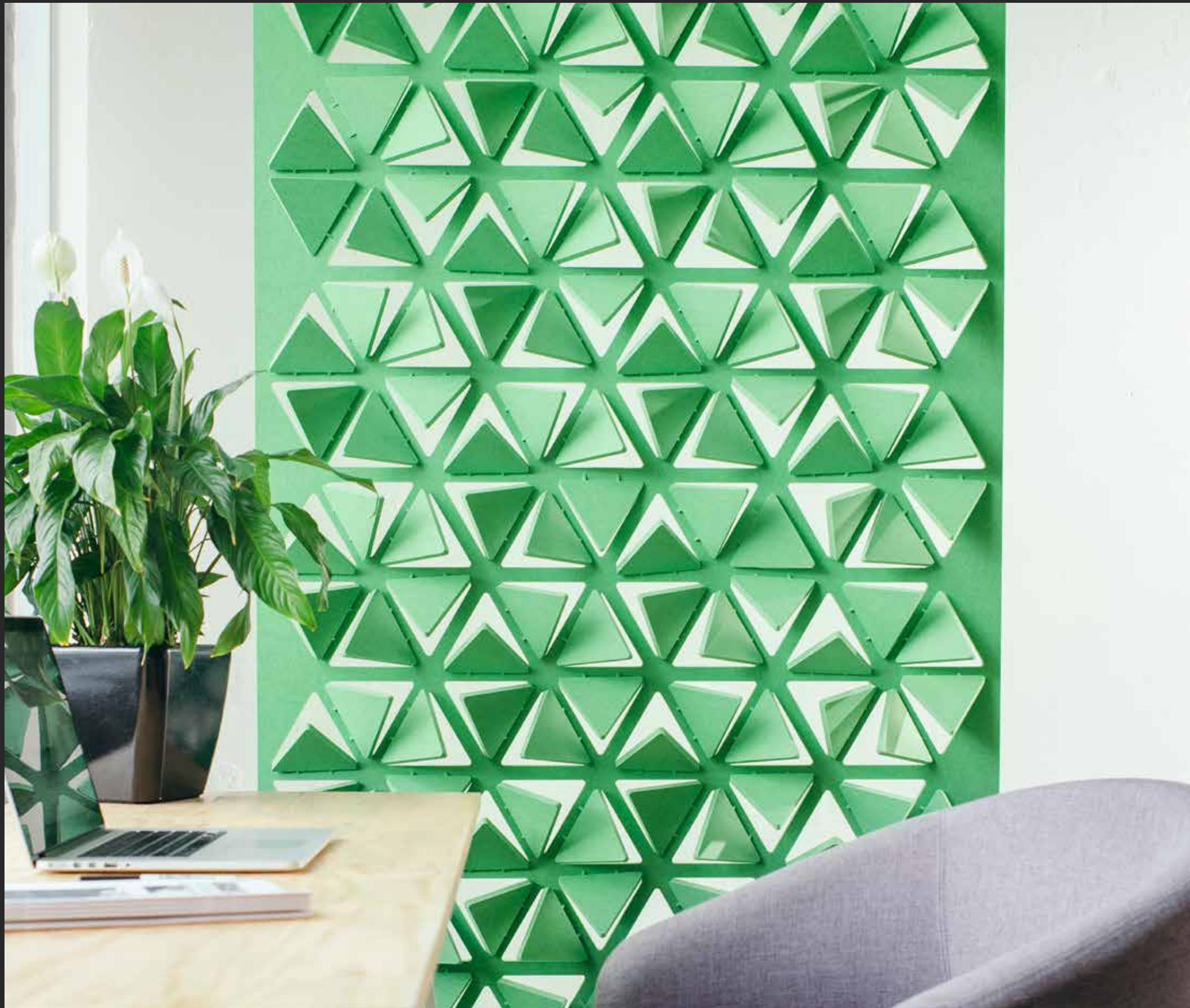
Design E5 more colors available



Design E6 more colors available

*Expanding Screens increase by 100% when fully expanded, therefore two screens are created from one panel of Cube™. Images are shown fully expanded.





Cascade™ Folding Screens

Dynamic and mutable, Cascade Folding Screens provide tactile privacy. The folding patterns, adjustable via water-cut hinges, can be gently altered to balance acoustic absorption and line-of-sight as required.

Patent

Expanding and Folding Panel Patent
US Patent 10,184,249

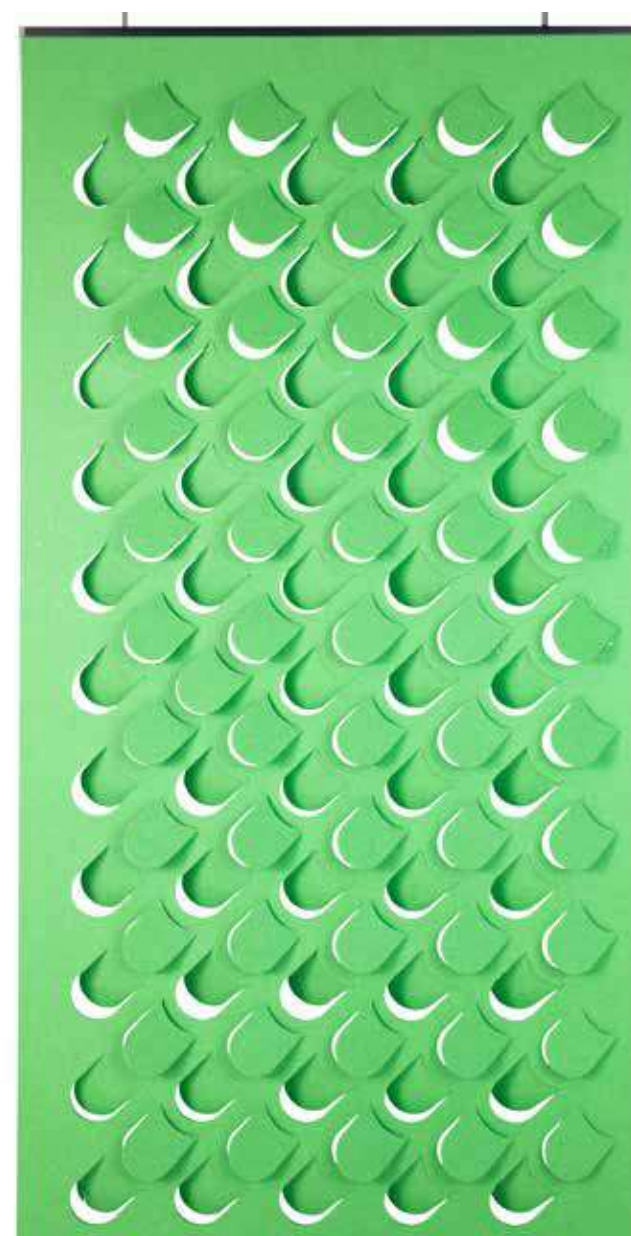
To find out more about Cascade
visit www.autexglobal.com



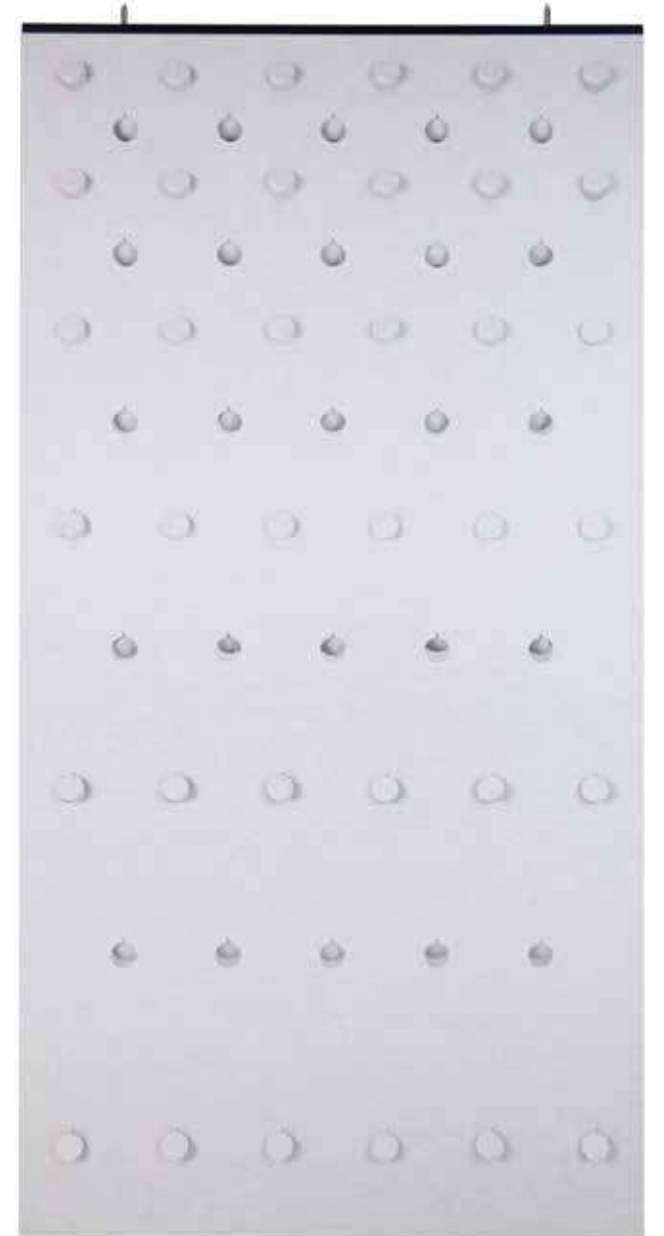
Folding design options

Pack contents

1 Cascade Folding Screen, 1 Frontier Channel,
2 Ceiling Connectors, 2 1 m Wires, 2 Autex Suspension Sliders



Design F1 more colors available

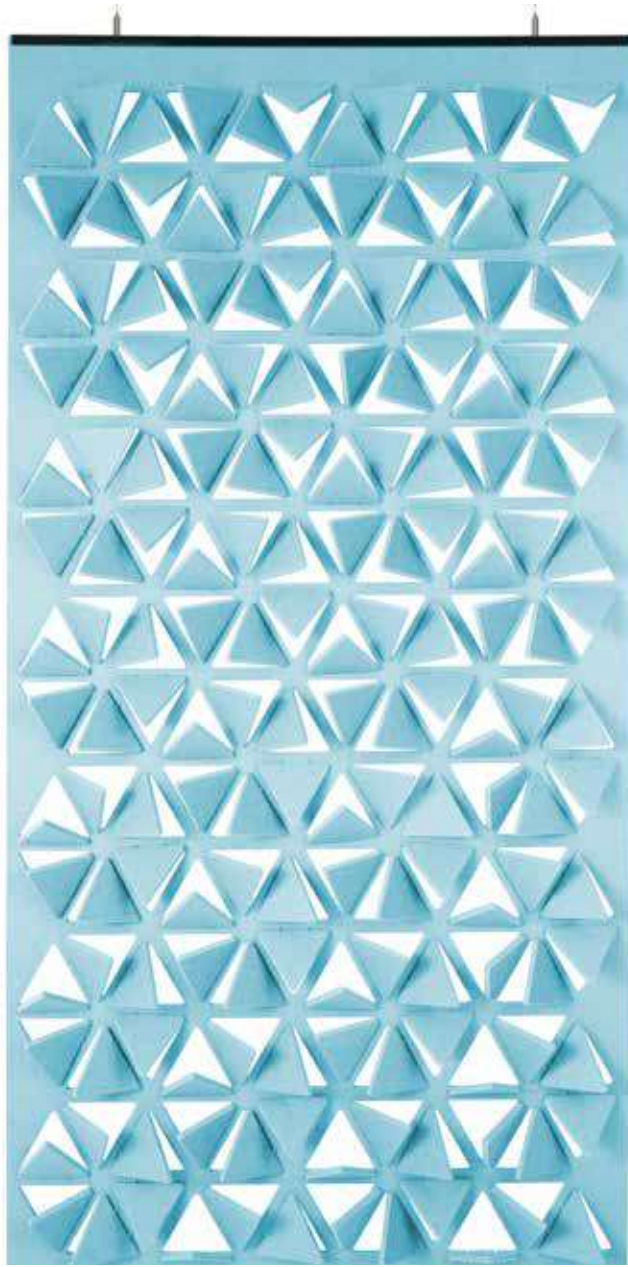


Design F2 more colors available

Folding design options

Pack contents

1 Cascade Folding Screen, 1 Frontier Channel,
2 Ceiling Connectors, 2.1 m Wires, 2 Autex Suspension Sliders



Design F3 more colors available

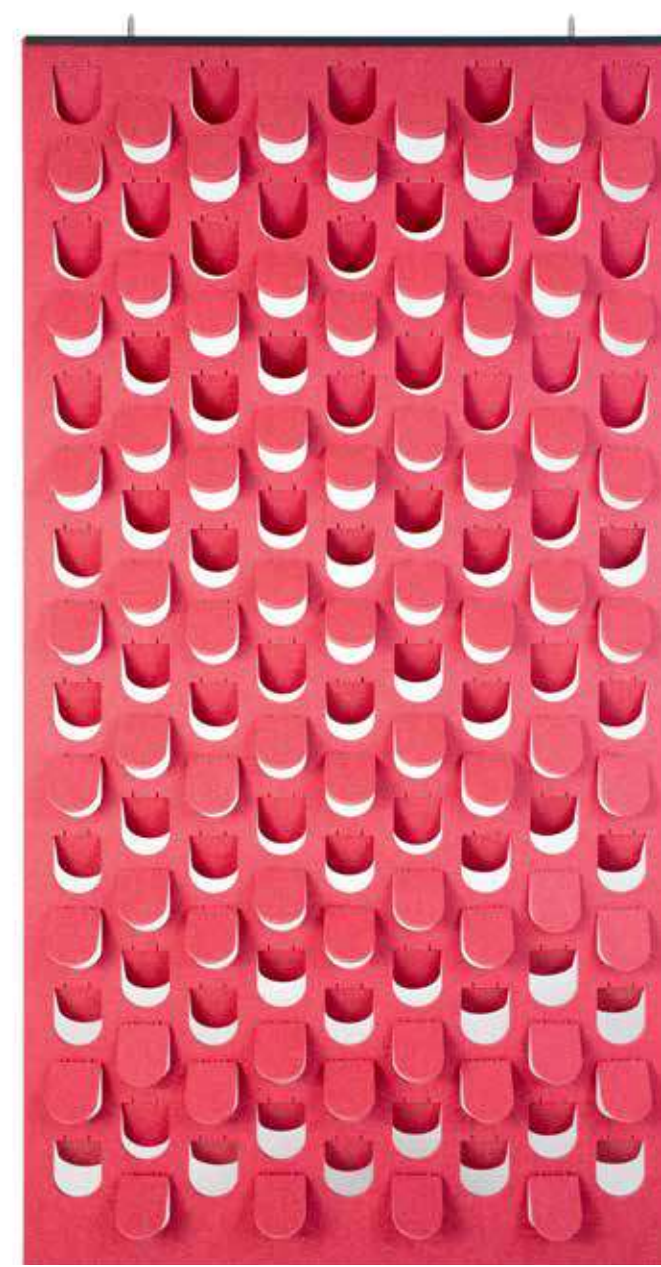


Design F4 more colors available

Folding design options

Pack contents

1 Cascade Folding Screen, 1 Frontier Channel,
2 Ceiling Connectors, 2.1 m Wires, 2 Autex Suspension Sliders



Design F5 more colors available

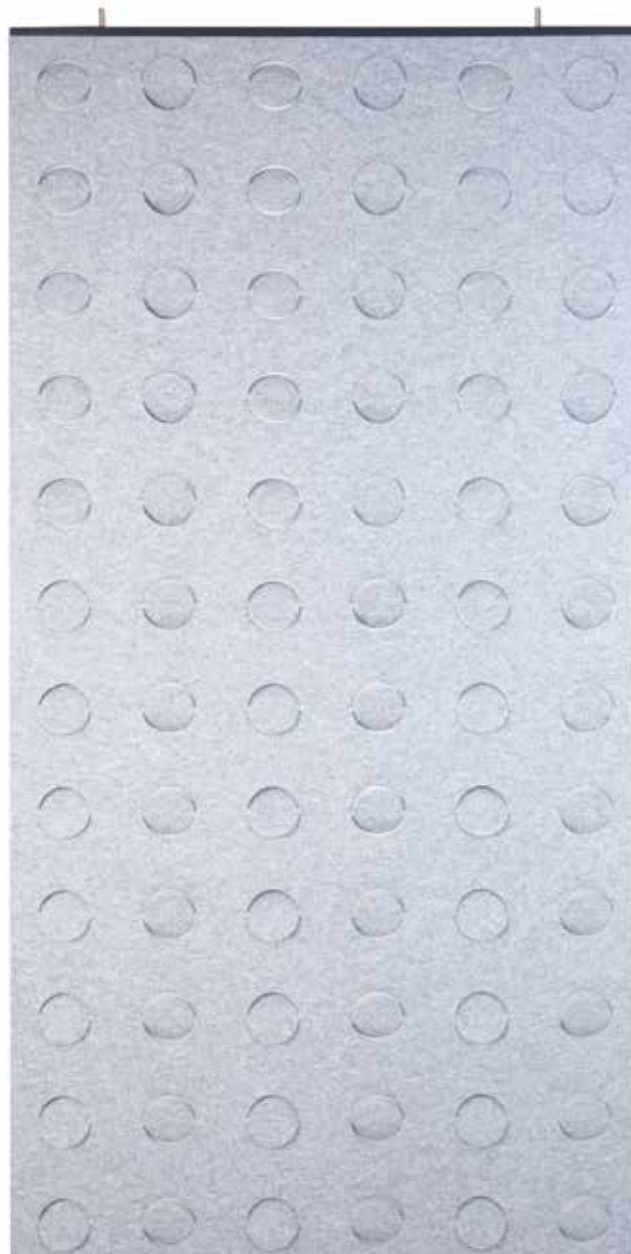


Design F6 more colors available

Folding design options

Pack contents

1 Cascade Folding Screen, 1 Frontier Channel,
2 Ceiling Connectors, 2 1 m Wires, 2 Autex Suspension Sliders



Design F7 more colors available

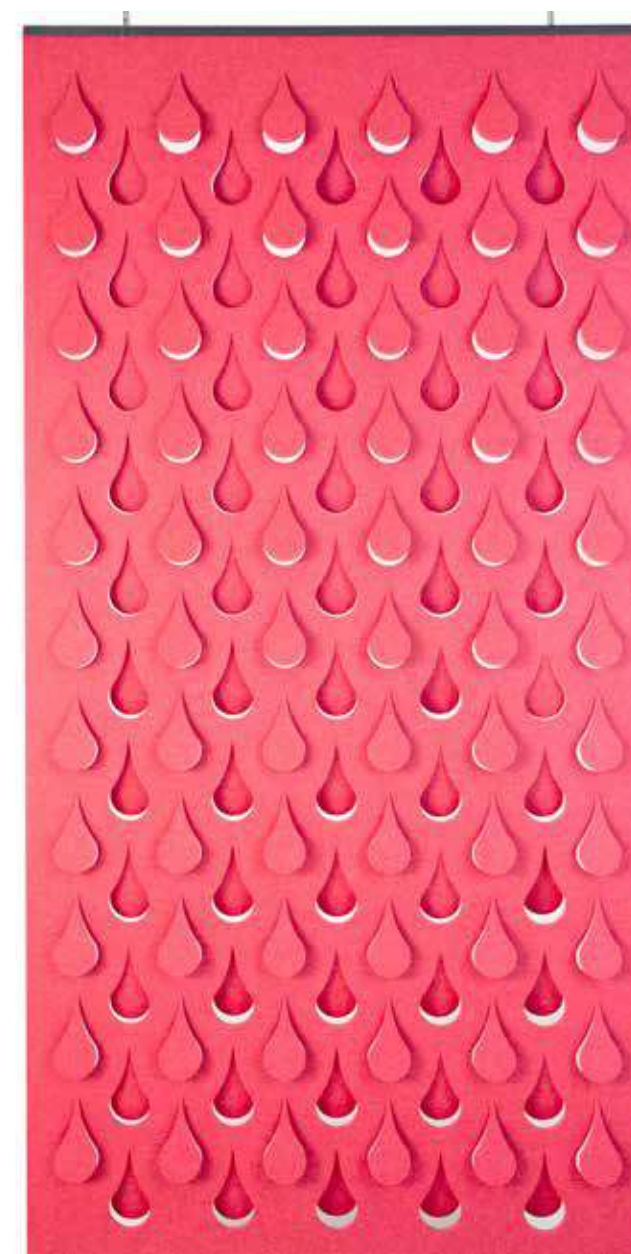
Folding design options

Pack contents

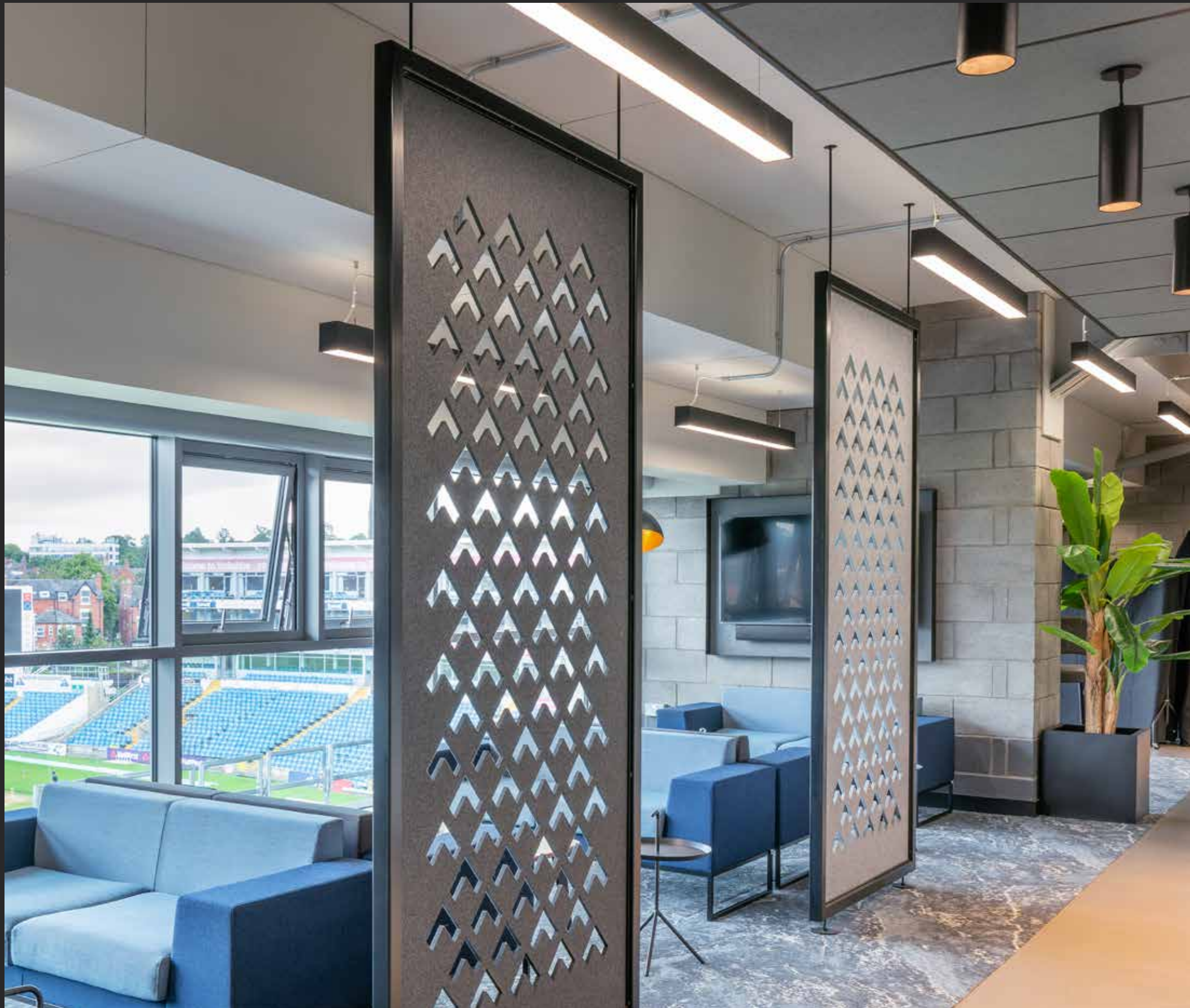
1 Cascade Folding Screen, 1 Frontier Channel,
2 Ceiling Connectors, 2 1 m Wires, 2 Autex Suspension Sliders



Design F8 more colors available



Design F9 more colors available



Cascade™ Static Screens

A semi-permanent acoustic screen, the Cascade Static Screen exists in limbo—sheltering you from distractions for as long as you need it to. Fixed or suspended at either end with the Cascade suspension kit, the Static Screen is easily installed, uninstalled, and relocated; equally at home in open-plan spaces that evolve often, and spaces with an established layout.

To find out more about Cascade
visit www.autexglobal.com

Static design options

Pack contents

1 Cascade Static Screen, 1 Frontier Channel,
2 Ceiling Connectors, 2 1 m Wires, 2 Autex Suspension Sliders



Design S1 more colors available



Design S2 more colors available



Design S3 more colors available

Static design options

Pack contents

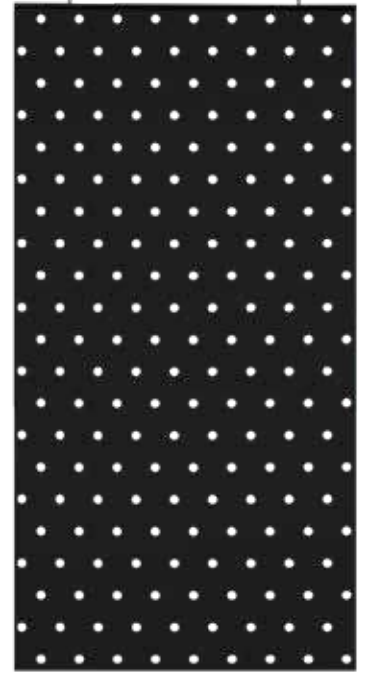
1 Cascade Static Screen, 1 Frontier Channel,
2 Ceiling Connectors, 2 1 m Wires, 2 Autex Suspension Sliders



Design S7 more colors available



Design S8 more colors available



Design S9 more colors available



Design S4 more colors available



Design S5 more colors available



Design S6 more colors available



Design S10 more colors available



Design S11 more colors available



Design S12 more colors available

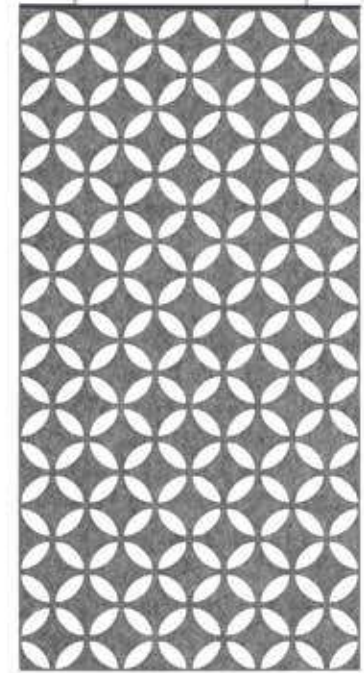
Static design options

Pack contents

1 Cascade Static Screen, 1 Frontier Channel,
2 Ceiling Connectors, 2 1 m Wires, 2 Autex Suspension Sliders



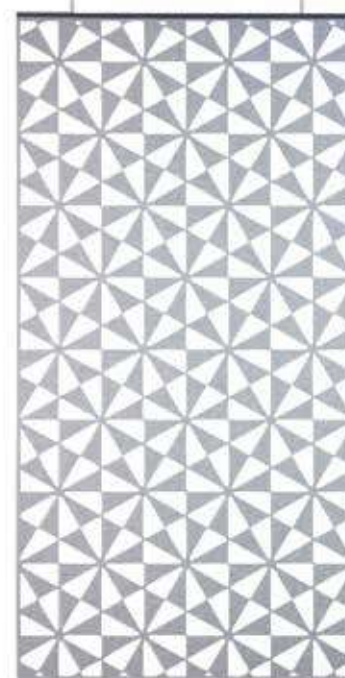
Design S13 more colors available



Design S14 more colors available



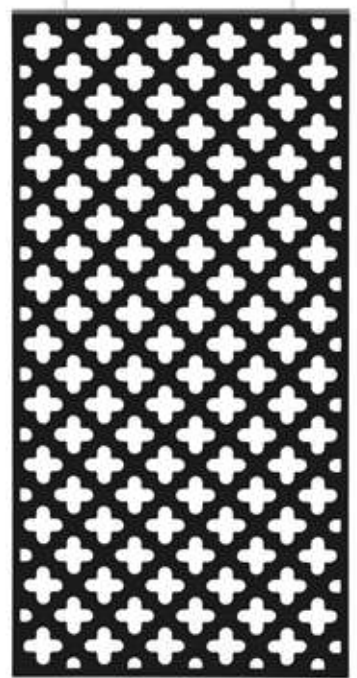
Design S15 more colors available



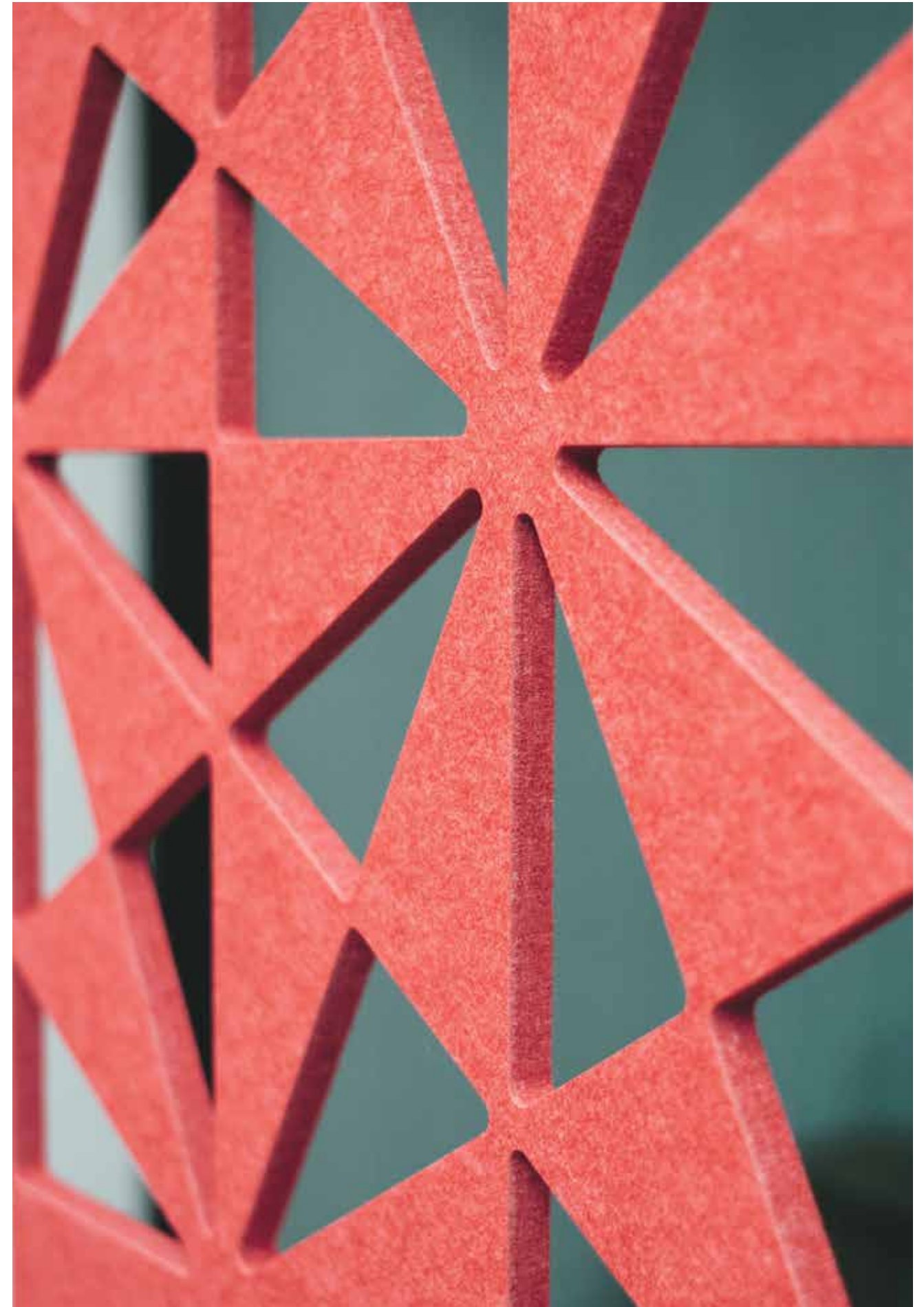
Design S16 more colors available



Design S17 more colors available



Design S18 more colors available



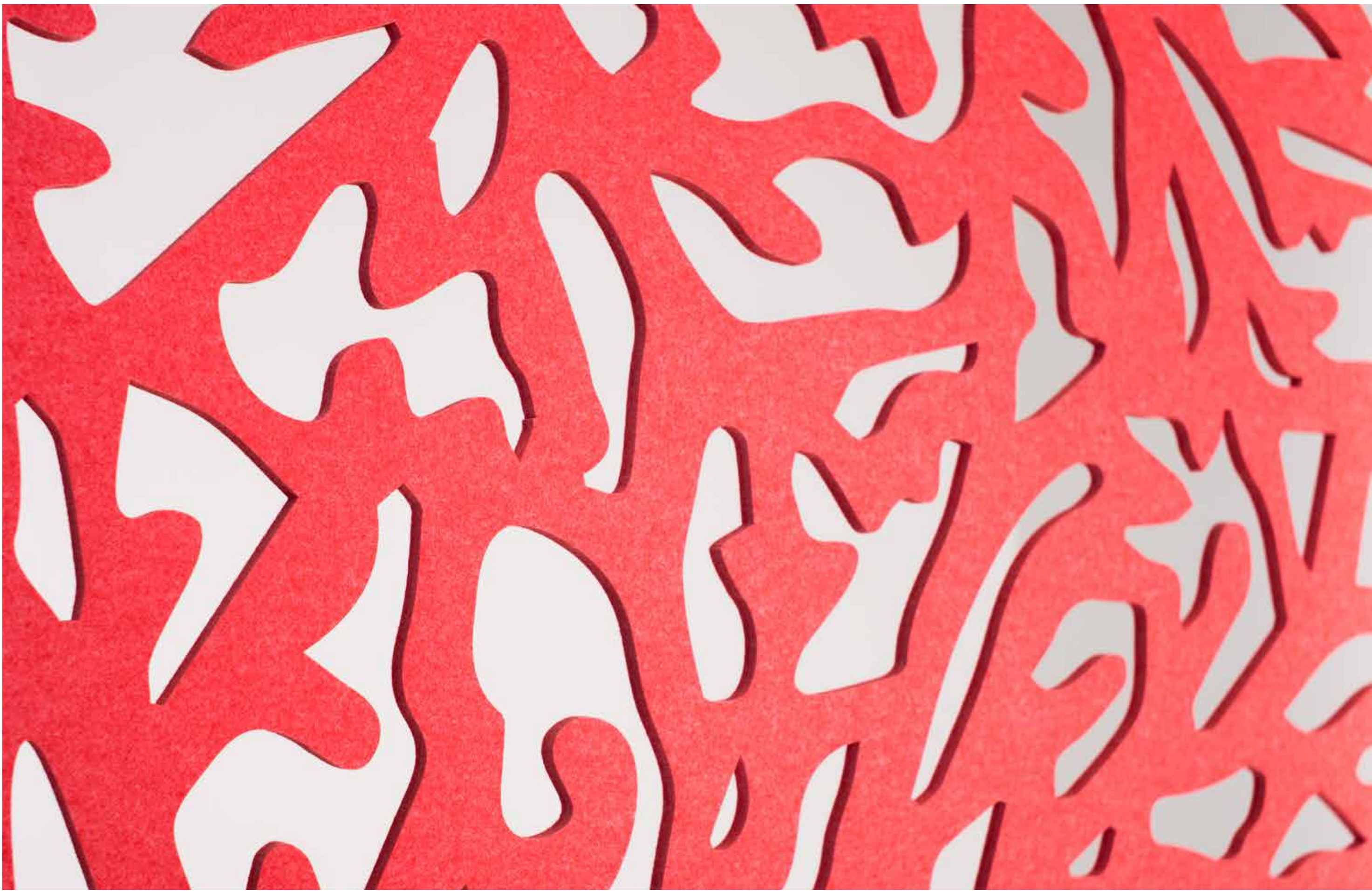


Customization

As creators and innovators, we understand your pursuit of the bold and unusual, the rare and exceptional—the brave, color-outside-the-lines ideas. Every space you design is unique, therefore, every element—from floor to ceiling—should be tailored to fit. Our customization tools offer unique avenues for creative expression to help you achieve your vision—all that's left to explore are the boundaries of your imagination.

Our customization capabilities include Print, Etch™, Groove, Precision Cut, Mold and Press, and Peel 'n' Stick.

To find out more about Cascade visit www.autexglobal.com



Cascade™ suspension kit

Each Cascade screen is supplied with one standard suspension kit for top suspension. All available suspension kit parts are pictured to the left. Additional parts are available for other install methods, detailed on the following page.

Please note that there are two Cascade Expanding Screens per pack, so you will receive two suspension kits.

Parts supplied per screen

Frontier™ Channel (A)
Part Number: RAFNEXPC1212
Attachment Set (B,2xC,D)
Part Number: RAHVAS

Additional parts

Clips (E)
Part Number: RAFTCC
Suspension Magnet (F)
Part Number: RAMALS1
Ceiling Grid Hanger (G)
Part Number: RADCLS12

To find out more about Cascade
visit www.autexglobal.com



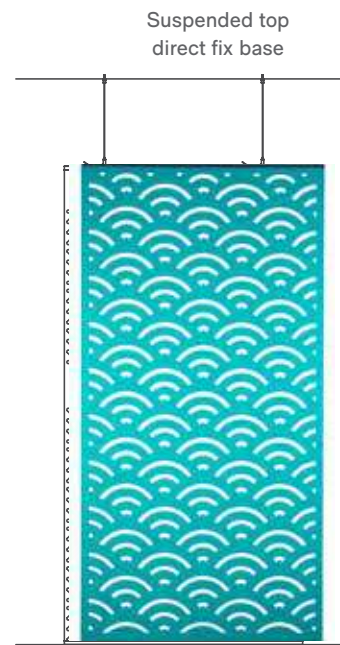
Installation options



No additional parts required



Additional parts required (per screen)
1 RAFNEXPC1212
1 RAHVAS
 *Does not apply to design S8



Additional parts required (per screen)
1 RAFNEXPC1212
1 RAFTCC
 *Does not apply to design S8



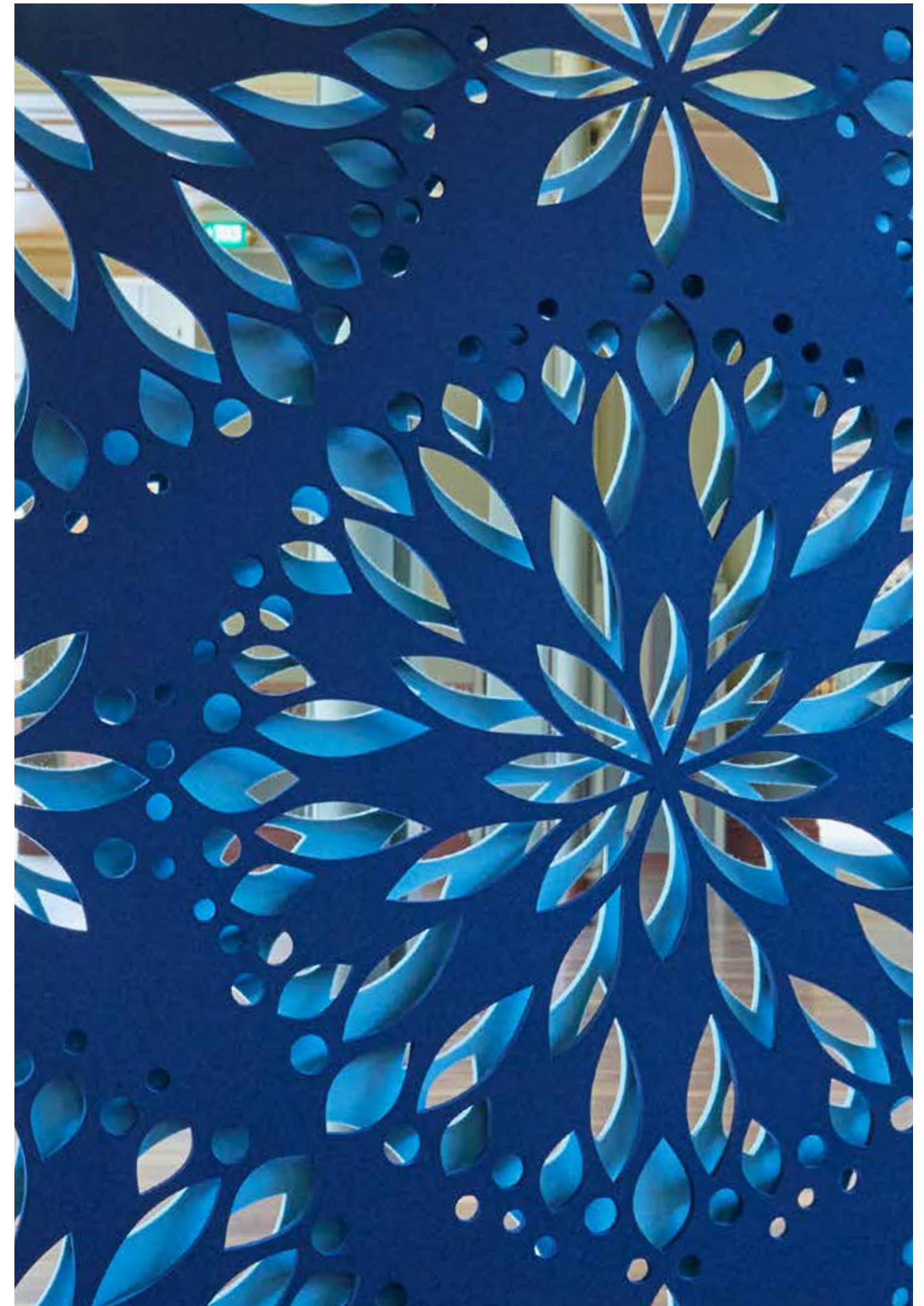
Additional parts required (per screen)
1 RAFNEXPC1212
3 RAFTCC
 *Does not apply to design S8



Additional parts required (per screen)
1 RAFNEXPC1212
6 RAFTCC
 *Does not apply to design S8



Additional parts required (per screen)
3 RAFTCC





Environmental certifications

Certifying your green building

Autex Acoustics products meet criteria for WELL, LEED, Green Star, and BREEAM building rating systems, helping you achieve certification for your project. For support and guidance on available rating system points please visit www.autexglobal.com, or speak with your Autex Acoustics account manager.



Mindful Materials

The Mindful Materials library provides transparent information on product environmental certifications and ingredients to help you make informed decisions when specifying. Explore our product range on the Mindful Materials library mindfulmaterials.com



Environmental Product Declaration

An Environmental Product Declaration (EPD) is a document that communicates information about the life-cycle environmental impact of a product, including embodied carbon. Our EPDs are created and verified in accordance with ISO 14025 and ISO 15804, used for construction products and services.



GreenRate – Level A

GreenRate is a multi-attribute environmental certification that scores products on a range of environmental, health, and social measures. Autex Acoustics products are certified to achieve GreenRate Level A. Level A is the highest GreenRate level and demonstrates the highest level of product sustainability.



Declare – International Living Future Institute

The ingredients in our products have been reviewed against the Living Future Challenge Red List and achieve a Third-Party Verified 'Red List Free' status.



Products achieve the highest 'LBC Red List Free' status when:

- Ingredients are 100% disclosed and are not found in the Red List
- Products are shown to meet VOC emissions limits

We assure the accuracy of our certifications by having our Declare labels independently verified by a third party expert.



Heath Product Declaration

A Health Product Declaration (HPD) is a document that reports the ingredients of a product and the health effects associated with these ingredients. A Health Product Declaration has been generated for each of our products.



CDPH Standard

CDPH Standard Method (CA Section 01350) is a widely used standard to evaluate building products for low volatile organic chemicals (VOC) and formaldehyde emissions. All Autex Acoustics products meet the limits set by CDPH and the LEED building rating scheme.



ISO Certifications

ISO 14001 – Environmental Management

Autex Acoustics manufactures under environmental management processes that are ISO certified. This certification gives assurance that we manage any environmental impacts within our operations.



ISO 9001 – Quality Management

Autex Acoustics has a strict quality management system that is ISO certified. Robust quality processes from raw material through to product release help ensure our products meet expectations.



ISO 45001 – Health and Safety Management

Autex Acoustics manufacturing operations have an ISO 45001 certified Health and Safety Management System to ensure the safety and wellbeing of our people.

● **Autex Industries Ltd**

702-718 Rosebank Rd
Private Bag 19988
Avondale 1746, Auckland
New Zealand
Freephone 0800 428 839
Phone +64 9 828 9179
Fax +64 9 828 5810

● **Autex Australia Pty Ltd**

166 Bamfield Road
PO Box 5099
West Heidelberg, Melbourne
VIC 3081, Australia
Freephone 1800 678 160
Phone +61 3 9457 6700
Fax +61 3 9457 1020

● **Autex Acoustics Ltd**

Unit J4, Lowfields Way,
Lowfields Business Park,
Elland, West Yorkshire
Hx5 9Da
United Kingdom
Phone +44 0 1422418899

● **Autex Acoustics LLC**

1630 Dan Kipper Dr,
Riverside, CA 92507
United States of America
Phone +1 424 203 1813

An ISO 9001, ISO 14001 and ISO 45001 certified company. The brand names and logos mentioned herein are registered or unregistered trademarks either owned or used under license by Autex Industries Limited or other members of the Autex Group. The contents of this document are protected by Copyright 2021 Autex Industries Ltd. All Rights Reserved. It is the user's responsibility to determine if the product and information presented in this document is suitable for the intended application by engaging a suitably qualified consultant. The information contained in this document is correct to the best of our knowledge at the date of its publication. To verify that this document is the most current publication please check our website or contact your Autex account manager.